

WARNER BROS. STAFF SHOP

Fabricated Surfaces Collection

2018



STAFF SHOP
818.954.2269



History Meets Modern

Introducing a diverse collection of fabricated surfaces
for interior and exterior use in sets & environments.

2018

Brick	1-28
Contemporary	31-35
Roof Tile / Siding	39-50
Stone	53-85
Tin / Glass Block / Wall Tile	89-97
Glass	101-102



AGED BRICK (BROWNSTONE) #F79

BRICK



COMBED BRICK

#F1



SPECIFICATIONS:

Style: Brick

Scenic Finish: Upon request

Full Sheet Dimensions:

2'9" High x 7'2½" Wide

Single Brick Size:

2¼" x 8¼"

Price: Call for details

SPECIAL FEATURES: Weather proof, highly durable, lightweight, low maintenance
Flame retardant - available.



COMBED BRICK

#F5



Style: Brick

Scenic Finish: Upon request

Full Sheet Dimensions:

1'11½" High x 4'7" Wide

Single Brick Size:

2" x 8"

Price: Call for details

SPECIAL FEATURES: Weather proof, Highly durable, lightweight, low maintenance
Flame retardant - available.



SQUEEZED MORTAR BRICK

#F6



SPECIFICATIONS:

Style: Brick

Scenic Finish: Upon request

Full Sheet Dimensions:

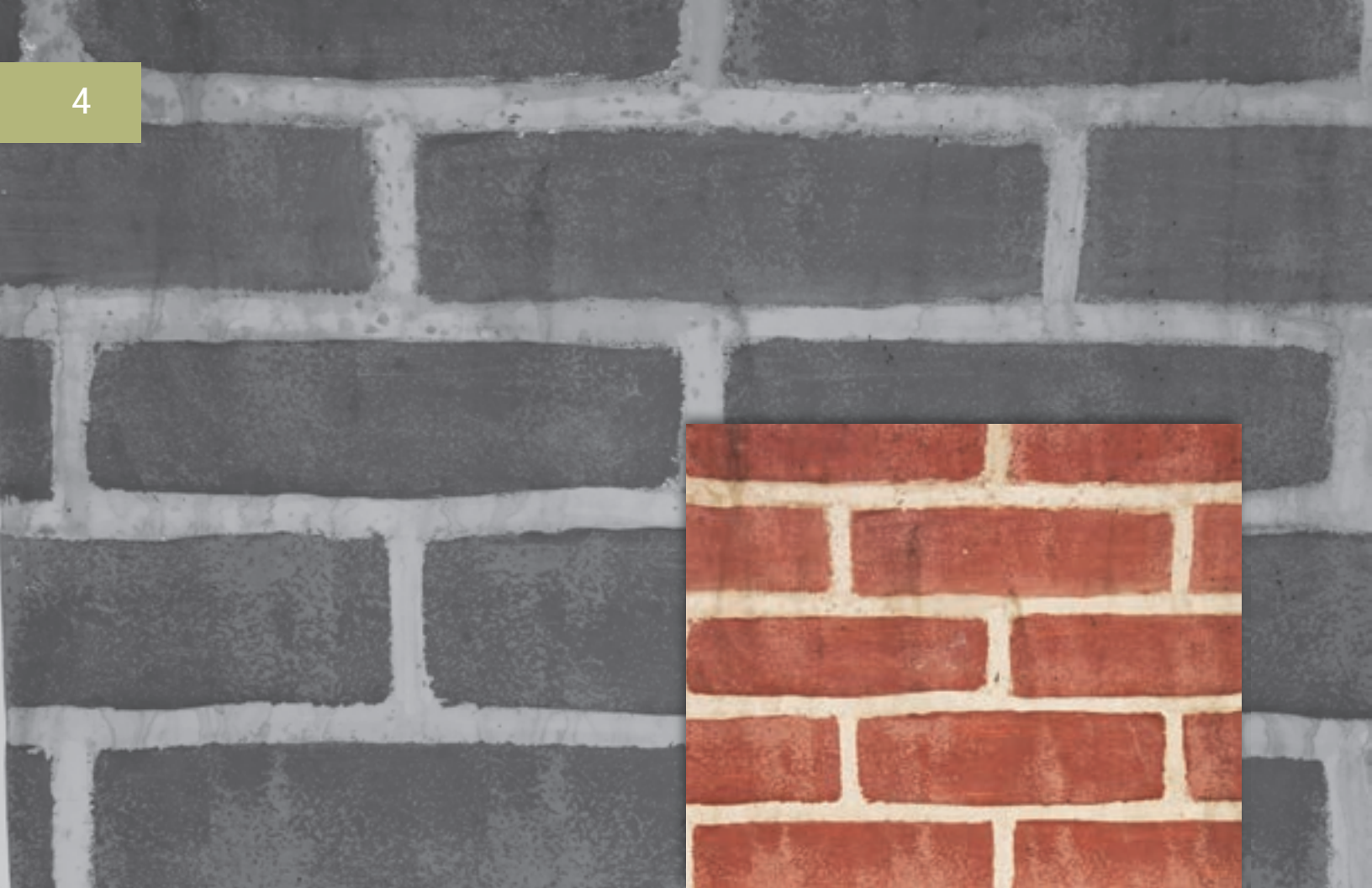
3'6" High x 6'6" Wide

Single Brick Size:

2½" x 8"

Price: Call for details

SPECIAL FEATURES: Weather proof, highly durable, lightweight, low maintenance
Flame retardant - available.



DIS COMMON

#F7



SPECIFICATIONS:

Style: Brick

Scenic Finish: Upon request

Full Sheet Dimensions:

3'5" High x 6'10" Wide

Single Brick Size:

2½" x 8½"

Price: Call for details

SPECIAL FEATURES: Weather proof, highly durable, lightweight, low maintenance
Flame retardant - available.



STOKES BRICK

#F8



SPECIFICATIONS:

Style: Brick

Scenic Finish: Upon request

Full Sheet Dimensions:

3'6" High x 7'1" Wide

Single Brick Size:

2" x 12"

Price: Call for details

SPECIAL FEATURES: Weather proof, highly durable, lightweight, low maintenance
Flame retardant - available.



ROMAN BRICK

#F9



SPECIFICATIONS:

Style: Brick

Scenic Finish: Upon request

Full Sheet Dimensions:

3'3" High x 6'10" Wide

Single Brick Size:

1" x 9"

Price: Call for details

SPECIAL FEATURES: Weather proof, highly durable, lightweight, low maintenance
Flame retardant - available.



ROMAN STACKED

#F10



SPECIFICATIONS:

Style: Brick

Scenic Finish: Upon request

Full Sheet Dimensions:

3'8" High x 7'7" Wide

Single Brick Size:

1" x 9"

Price: Call for details

SPECIAL FEATURES: Weather proof, highly durable, lightweight, low maintenance
Flame retardant - available.



NEW HERRINGBONE BRICK

#F12



SPECIFICATIONS:

Style: Brick

Scenic Finish: Upon request

Full Sheet Dimensions:

3'2" High x 7'4" Wide

Single Brick Size:

2½" x 8¼"

Price: Call for details

SPECIAL FEATURES: Weather proof, highly durable, lightweight, low maintenance
Flame retardant - available.



AGED COMMON BRICK

#F14



SPECIFICATIONS:

Style: Brick

Scenic Finish: Upon request

Full Sheet Dimensions:

3'6" High x 6'7" Wide

Single Brick Size:

2½" x 8¼"

Price: Call for details

SPECIAL FEATURES: Weather proof, highly durable, lightweight, low maintenance
Flame retardant - available.



DALE BRICK

#F17



SPECIFICATIONS:

Style: Brick

Scenic Finish: Upon request

Full Sheet Dimensions:

3'5" High x 6'7" Wide

Single Brick Size:

2½" x 8¼"

Price: Call for details

SPECIAL FEATURES: Weather proof, highly durable, lightweight, low maintenance
Flame retardant - available.



CLUE BRICK

#F18



SPECIFICATIONS:

Style: Brick

Scenic Finish: Upon request

Full Sheet Dimensions:

3'6" High x 6'8½" Wide

Single Brick Size:

2½" x 8½"

Price: Call for details

SPECIAL FEATURES: Weather proof, highly durable, lightweight, low maintenance
Flame retardant - available.



ROMAN STACKED

#F34



SPECIFICATIONS:

Style: Brick

Scenic Finish: Upon request

Full Sheet Dimensions:

3'6" High x 7' Wide

Single Brick Size:

1½" x 11¼"

Price: Call for details

SPECIAL FEATURES: Weather proof, highly durable, lightweight, low maintenance
Flame retardant - available.



F/2 BRICK

#F46



SPECIFICATIONS:

Style: Brick

Scenic Finish: Upon request

Full Sheet Dimensions:

3' High x 6'6" Wide

Single Brick Size:

1½" x 6"

Price: Call for details

SPECIAL FEATURES: Weather proof, highly durable, lightweight, low maintenance
Flame retardant - available.

F47A:



CORNERS
8½"H X 3'6"L

F47B:



HEADERS
8"H X 4'1"L

F47C:



SILLS
4"H X 4'L

F47D:



SOLDIER COURSE
8½"H X 6'10½"L



ADD ONS

#F47 A-D

SPECIFICATIONS:

Style: Brick

Scenic Finish: Upon request

Corners, Headers, Sills and

Soldier Course Available for

F50, F51 and F52

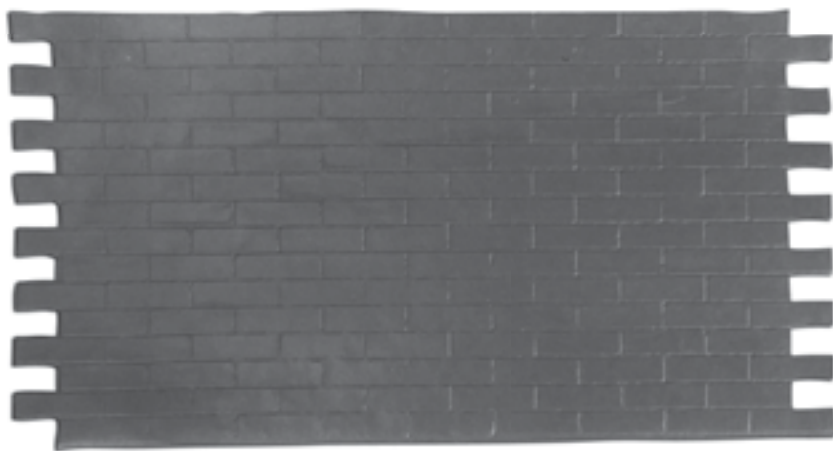
Price: Call for details

SPECIAL FEATURES: Weather proof, highly durable, lightweight, low maintenance
Flame retardant - available.



ANNIE BRICK

#F48



SPECIFICATIONS:

Style: Brick

Scenic Finish: Upon request

Full Sheet Dimensions:

3'6" High x 6'6" Wide

Single Brick Size:

2¼" x 8"

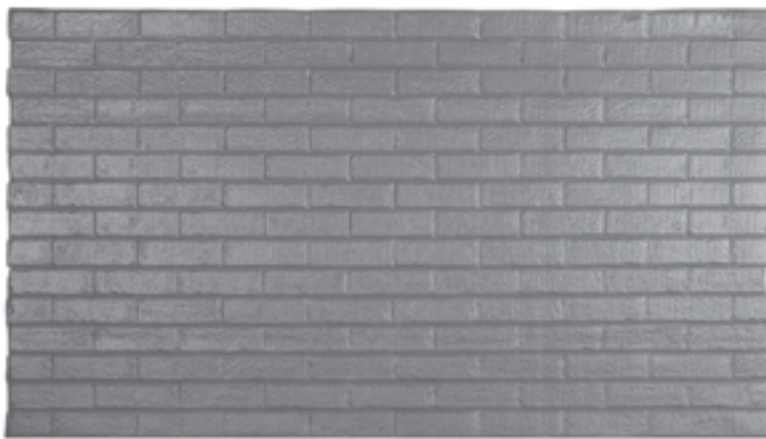
Price: Call for details

SPECIAL FEATURES: Weather proof, highly durable, lightweight, low maintenance
Flame retardant - available.



COMBED BRICK 2

#F49



SPECIFICATIONS:

Style: Brick

Scenic Finish: Upon request

Full Sheet Dimensions:

3'4" High x 5'11" Wide

Single Brick Size:

2¼" x 7½"

Price: Call for details

SPECIAL FEATURES: Weather proof, highly durable, lightweight, low maintenance
Flame retardant - available.



NEW COMMON

#F50



SPECIFICATIONS:

Style: Brick

Scenic Finish: Upon request

Full Sheet Dimensions:

3'6" High x 7' Wide

Single Brick Size:

2½" x 8"

Add Ons: Corners, Headers, Sills & Soldier Course Available. See #F47

Price: Call for details

SPECIAL FEATURES: Weather proof, highly durable, lightweight, low maintenance
Flame retardant - available.



MURDER YOUR WIFE BRICK

#F51



SPECIFICATIONS:

Style: Brick

Scenic Finish: Upon request

Full Sheet Dimensions:

3'6" High x 7' Wide

Single Brick Size:

2½" x 7½"

Add Ons: Corners, Headers, Sills & Soldier Course Available. See #F47

Price: Call for details

SPECIAL FEATURES: Weather proof, highly durable, lightweight, low maintenance
Flame retardant - available.



OLD COMMON

#F52



SPECIFICATIONS:

Style: Brick

Scenic Finish: Upon request

Full Sheet Dimensions:

3'6" High x 7' Wide

Single Brick Size:

2¼" x 7½"

Add Ons: Corners, Headers, Sills & Soldier Course Available. See #F47

Price: Call for details

SPECIAL FEATURES: Weather proof, highly durable, lightweight, low maintenance
Flame retardant - available.



SMALL FLEMISH BOND

#F53



SPECIFICATIONS:

Style: Brick

Scenic Finish: Upon request

Full Sheet Dimensions:

3'6" High x 7'6" Wide

Single Brick Size:

2" x 7¼"

Price: Call for details

SPECIAL FEATURES: Weather proof, highly durable, lightweight, low maintenance
Flame retardant - available.



LARGE FLEMISH BOND

#F54



SPECIFICATIONS:

Style: Brick

Scenic Finish: Upon request

Full Sheet Dimensions:

3'6" High x 7' Wide

Single Brick Size:

2½" x 8"

Price: Call for details

SPECIAL FEATURES: Weather proof, highly durable, lightweight, low maintenance
Flame retardant - available.



ST. LOUIS BRICK

#F62



SPECIFICATIONS:

Style: Brick

Scenic Finish: Upon request

Full Sheet Dimensions:

7' High x 3'6" Wide

Single Brick Size:

2¼" x 8¼"

Price: Call for details

SPECIAL FEATURES: Weather proof, highly durable, lightweight, low maintenance
Flame retardant - available.



RIVA

#F63

**SPECIFICATIONS:**

Style: Brick

Scenic Finish: Upon request

Full Sheet Dimensions:

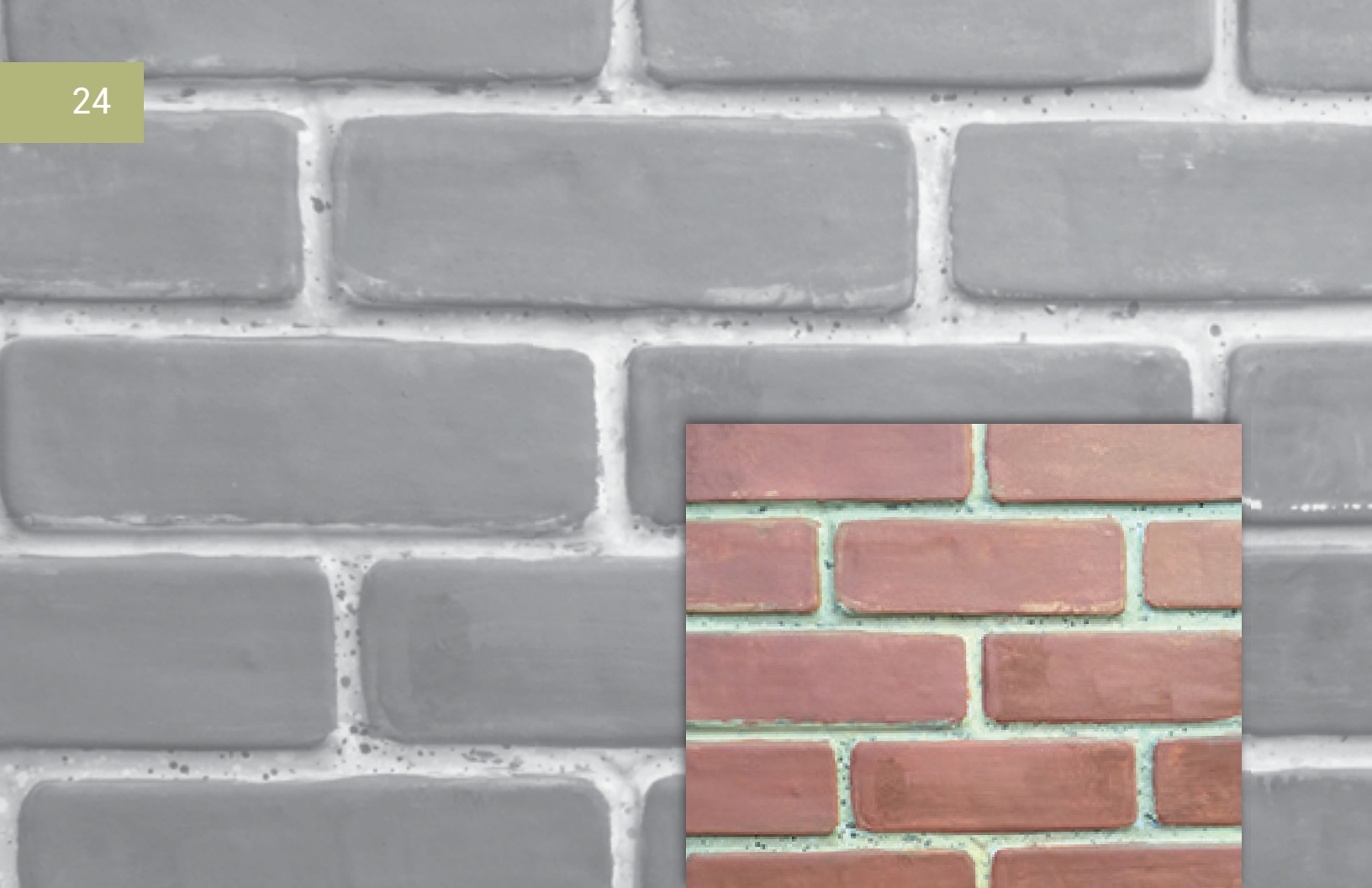
7' High x 3'6" Wide

Single Brick Size:

2" x 8"

Price: Call for details

SPECIAL FEATURES: Weather proof, highly durable, lightweight, low maintenance
Flame retardant - available.



BRICK AND MORTAR

#F66



SPECIFICATIONS:

Style: Brick

Scenic Finish: Upon request

Full Sheet Dimensions:

3'6" High x 7' Wide

Single Brick Size:

1 $\frac{3}{4}$ " x 6"

Price: Call for details

SPECIAL FEATURES: Weather proof, highly durable, lightweight, low maintenance
Flame retardant - available.



THIN BRICK

#F73



SPECIFICATIONS:

Style: Brick

Scenic Finish: Upon request

Full Sheet Dimensions:

3'6" High x 6'3" Wide

Single Brick Size:

2" x 6"

Price: Call for details

SPECIAL FEATURES: Weather proof, highly durable, lightweight, low maintenance
Flame retardant - available.



AGED BRICK (BROWNSTONE)

#F79



SPECIFICATIONS:

Style: Brick

Scenic Finish: Upon request

Full Sheet Dimensions:

3'1" High x 6'4" Wide

Single Brick Size:

2" x 8"

Price: Call for details

SPECIAL FEATURES: Weather proof, highly durable, lightweight, low maintenance
Flame retardant - available.



N.Y. BRICK

#F109



SPECIFICATIONS:

Style: Brick

Scenic Finish: Upon request

Full Sheet Dimensions:

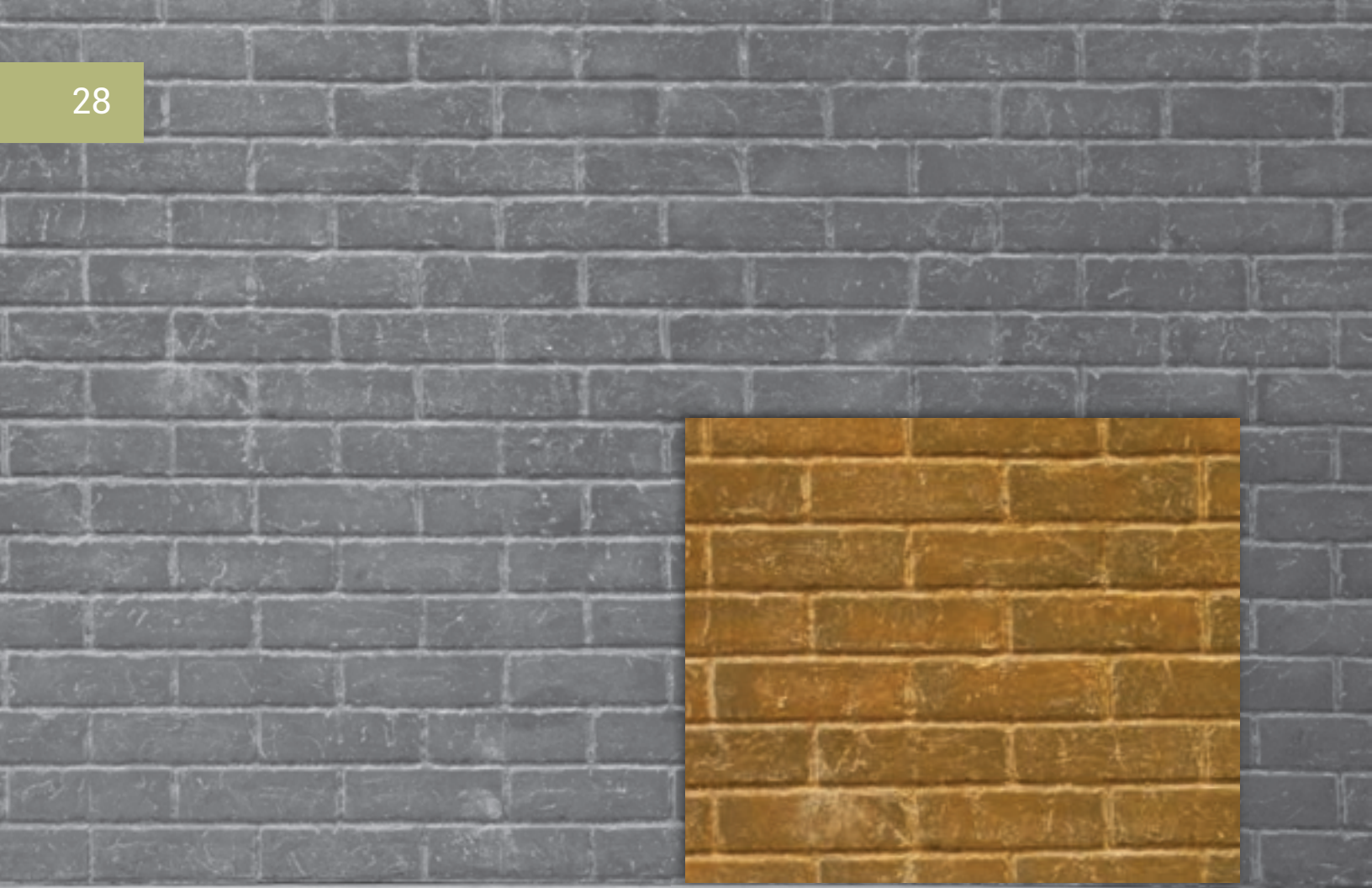
3'6" High x 7'6" Wide

Single Brick Size:

2½" x 8¼"

Price: Call for details

SPECIAL FEATURES: Weather proof, highly durable, lightweight, low maintenance
Flame retardant - available.



CHESTER BRICK

#F110



SPECIFICATIONS:

Style: Brick

Scenic Finish: Upon request

Full Sheet Dimensions:

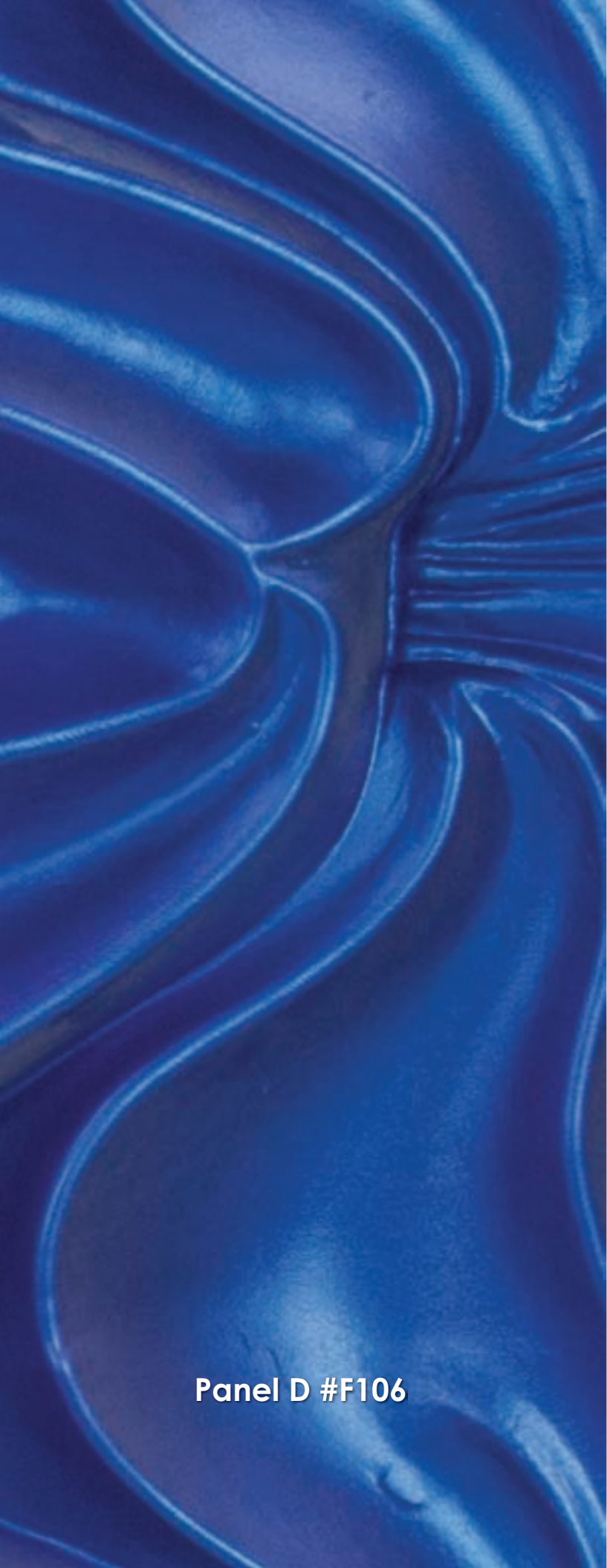
3'6" High x 6'6" Wide

Single Brick Size:

2 $\frac{1}{4}$ " x 7 $\frac{1}{2}$ "

Price: Call for details

SPECIAL FEATURES: Weather proof, Highly durable, lightweight, low maintenance
Flame retardant - available.



Panel D #F106

CONTEMPORARY



PANEL A

#F103

SPECIFICATIONS:

Style: Contemporary

Scenic Finish: Upon request

Full Sheet Dimensions:

3'5" High x 7'5" Wide

Price: Call for details

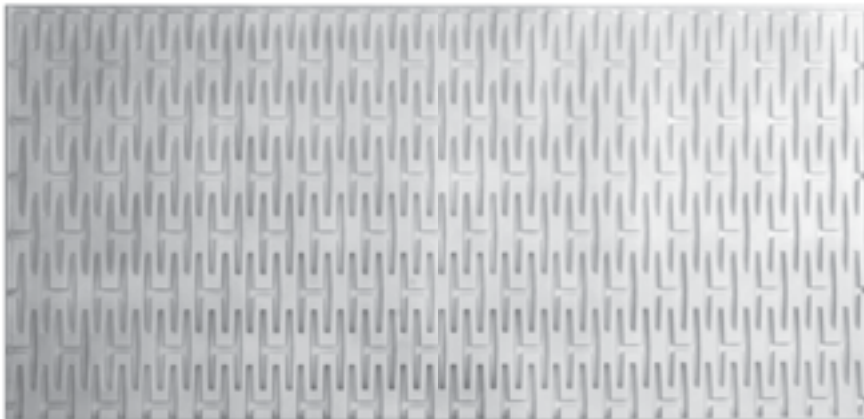


SPECIAL FEATURES: Weather proof, highly durable, lightweight, low maintenance
Flame retardant - available.



PANEL B

#F104



SPECIFICATIONS:

Style: Contemporary

Scenic Finish: Upon request

Full Sheet Dimensions:

3'9" High x 7'8" Wide

Price: Call for details

SPECIAL FEATURES: Weather proof, highly durable, lightweight, low maintenance
Flame retardant - available.



PANEL D

#F106

**SPECIFICATIONS:**

Style: Contemporary

Scenic Finish: Upon request

Full Sheet Dimensions:

2'10" High x 6'3" Wide

Price: Call for details

SPECIAL FEATURES: Weather proof, highly durable, lightweight, low maintenance
Flame retardant - available.



PANEL E

#F107

**SPECIFICATIONS:**

Style: Contemporary

Scenic Finish: Upon request

Full Sheet Dimensions:

3'9" High x 7'9" Wide

Price: Call for details

SPECIAL FEATURES: Weather proof, highly durable, lightweight, low maintenance
Flame retardant - available.



PANEL F

#F108

**SPECIFICATIONS:**

Style: Contemporary

Scenic Finish: Upon request

Full Sheet Dimensions:

3'9" High x 7'9" Wide

Price: Call for details

SPECIAL FEATURES: Weather proof, highly durable, lightweight, low maintenance
Flame retardant - available.



Gingerbread Shingle #F55

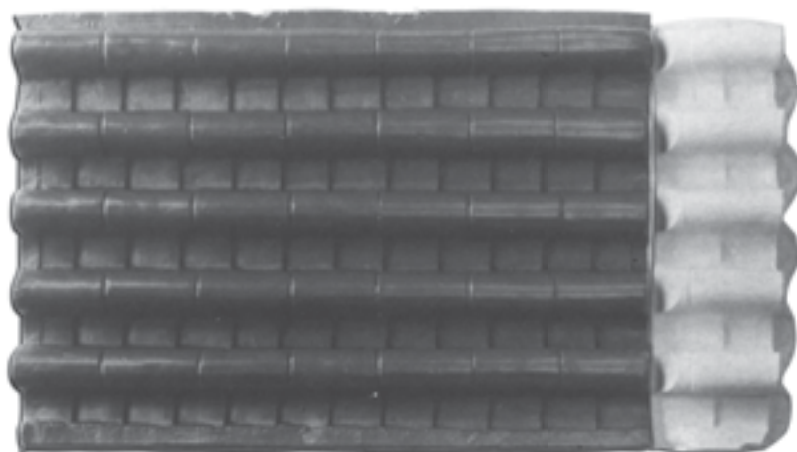
ROOF TILE / SIDING



JAPANESE ROOF TILE

AND STARTER COURSE

#F39



SPECIFICATIONS:

Style: Roof Tile

Scenic Finish: Upon request

Full Sheet Dimensions:

3' High x 6' Wide

Price: Call for details

Single Tile Size:

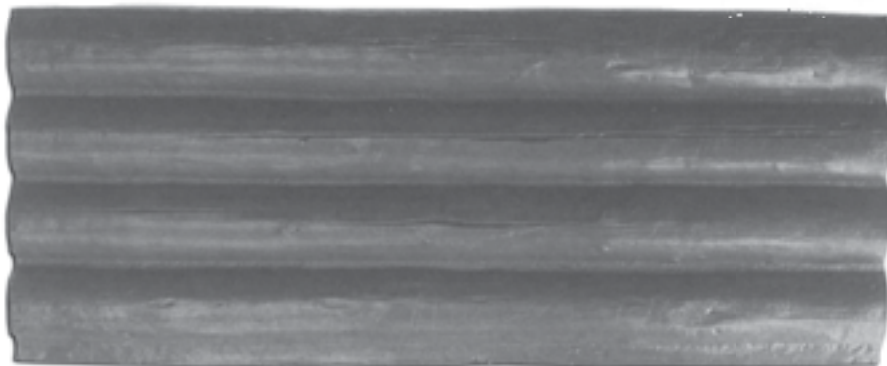
4" TO 4"

SPECIAL FEATURES: Weather proof, highly durable, lightweight, low maintenance
Flame retardant - available.



LOGS

#F40

**SPECIFICATIONS:**

Style: Roof Tile

Scenic Finish: Upon request

Full Sheet Dimensions:

3' High x 7'5" Wide

Price: Call for details

SPECIAL FEATURES: Weather proof, highly durable, lightweight, low maintenance
Flame retardant - available.



SPANISH ROOF TILE

#F41



SPECIFICATIONS:

Style: Roof Tile

Scenic Finish: Upon request

Full Sheet Dimensions:

3'6" High x 7' Wide

Single Tile Size:

7" TO 15"

Price: Call for details

SPECIAL FEATURES: Weather proof, highly durable, lightweight, low maintenance
Flame retardant - available.



ROOF TILE

#F42



SPECIFICATIONS:

Style: Roof Tile

Scenic Finish: Upon request

Full Sheet Dimensions:

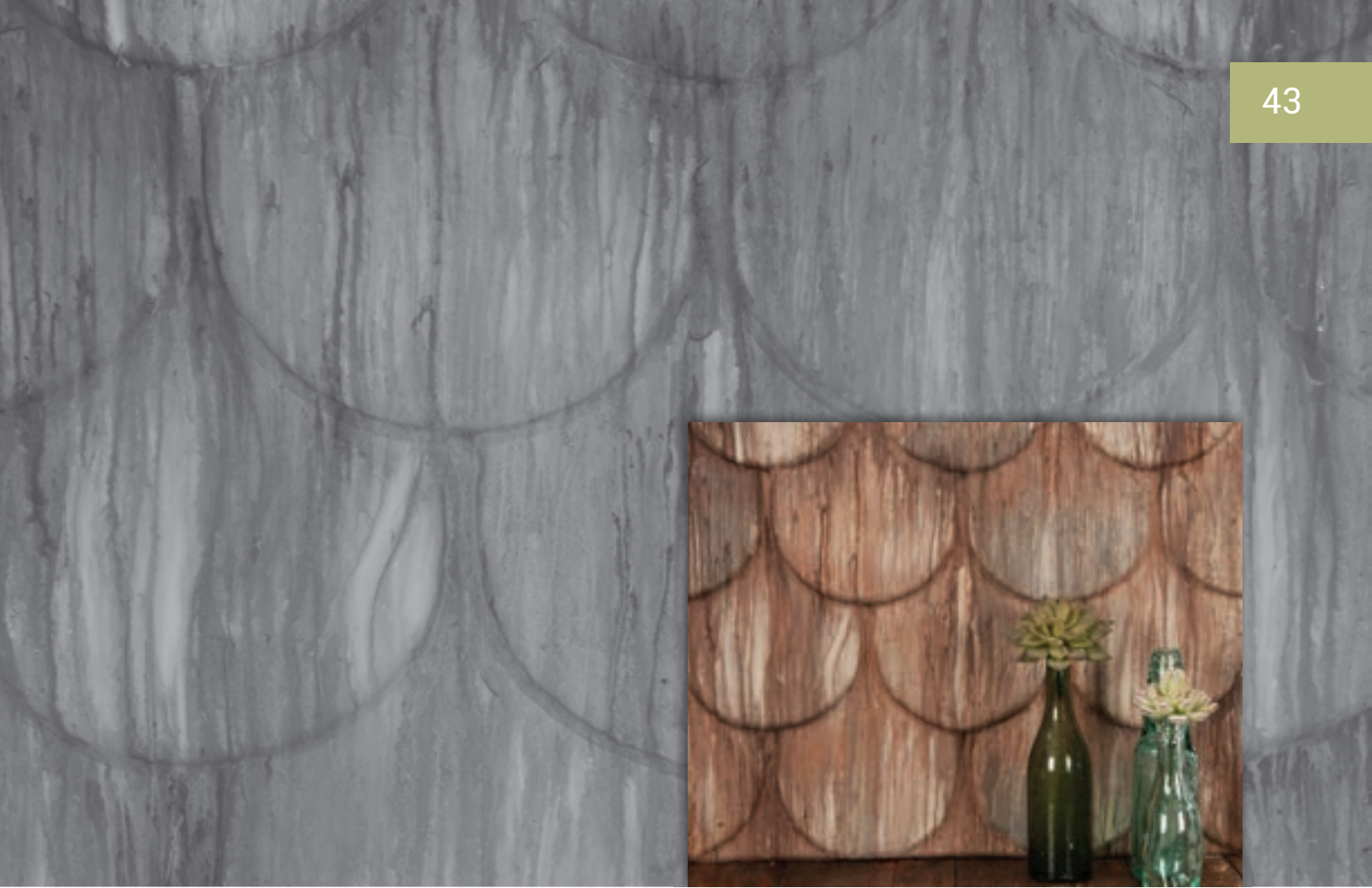
3'6" High x 6'6" Wide

Single Tile Size:

7" TO 11"

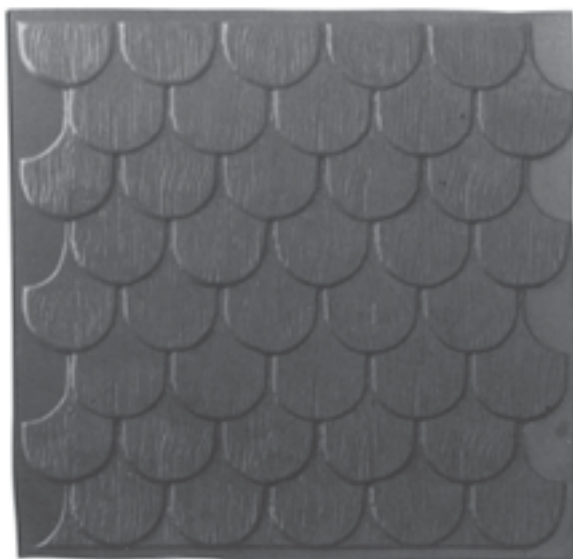
Price: Call for details

SPECIAL FEATURES: Weather proof, highly durable, lightweight, low maintenance
Flame retardant - available.



GINGERBREAD SHINGLE

#F55



SPECIFICATIONS:

Style: Roof Tile

Scenic Finish: Upon request

Full Sheet Dimensions:

3'6" High x 6'6" Wide

Single Tile Size:

7" x 11"

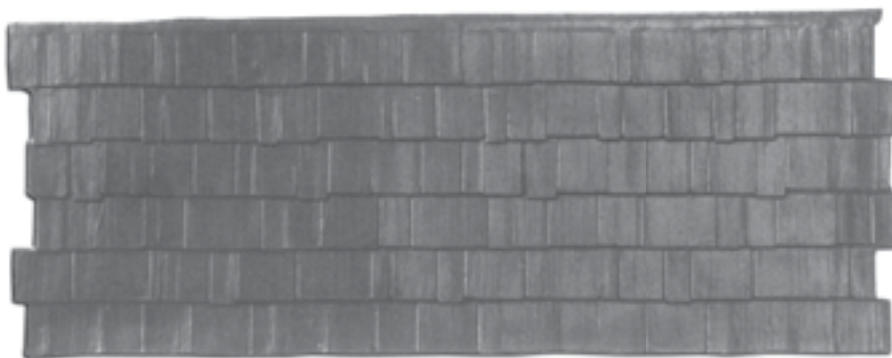
Price: Call for details

SPECIAL FEATURES: Weather proof, highly durable, lightweight, low maintenance
Flame retardant - available.



WOOD SHINGLE

#F56



SPECIFICATIONS:

Style: Roof Tile

Scenic Finish: Upon request

Full Sheet Dimensions:

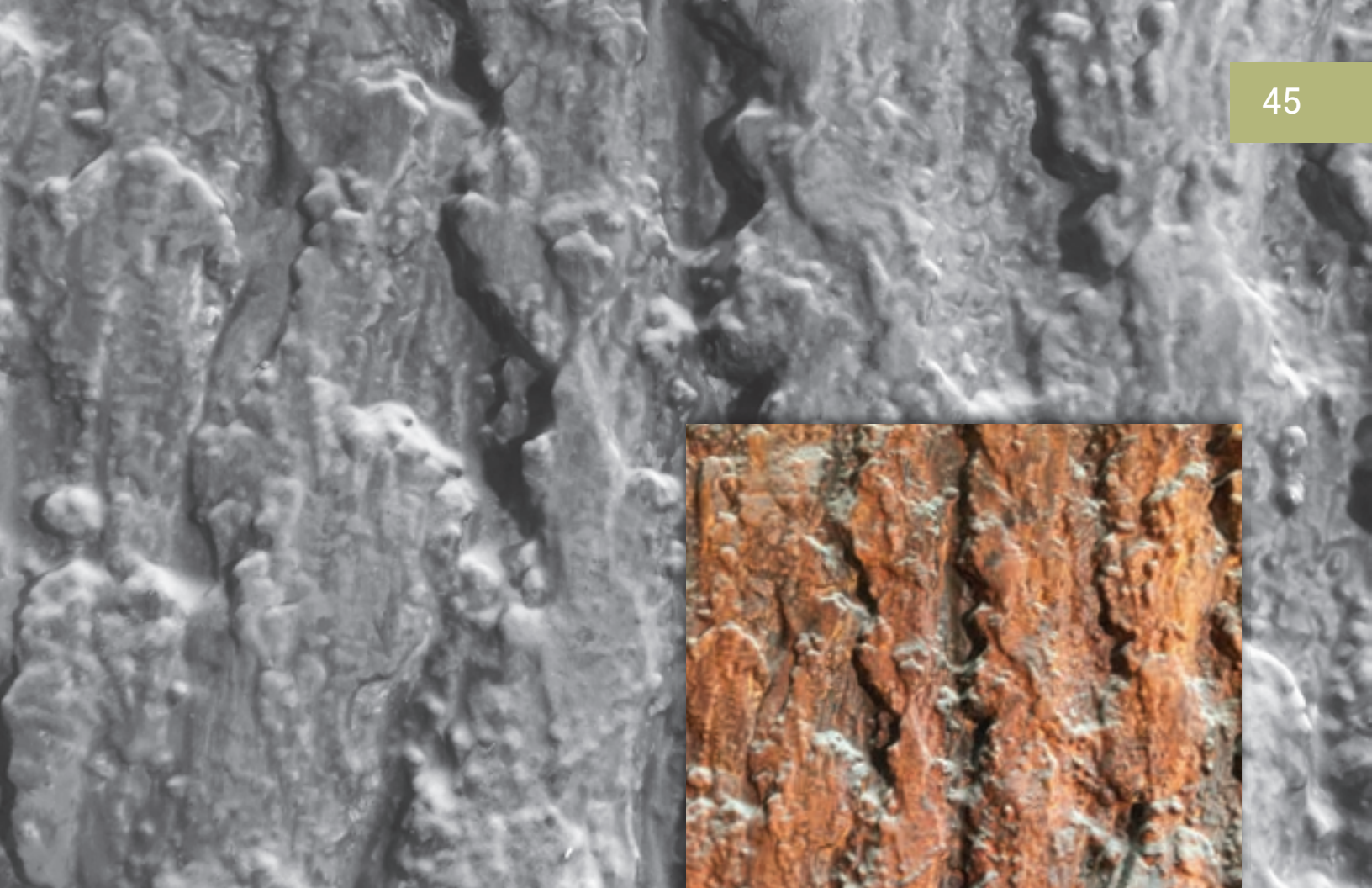
3' High x 7'6" Wide

Single Tile Size:

5" TO 5½"

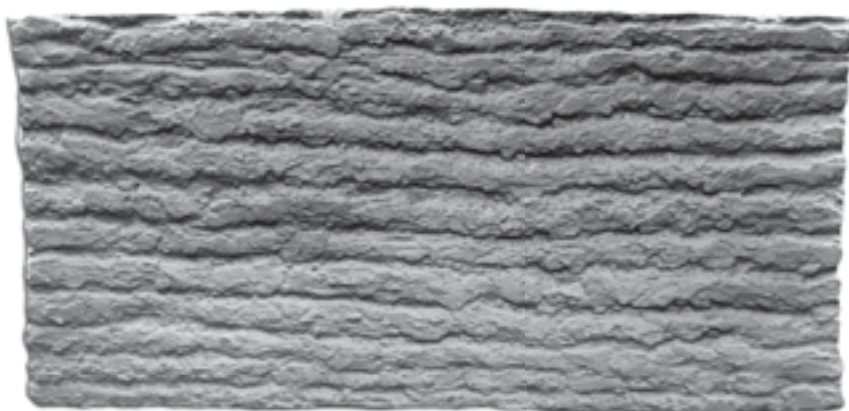
Price: Call for details

SPECIAL FEATURES: Weather proof, highly durable, lightweight, low maintenance
Flame retardant - available.



TREE BARK

#F68



SPECIFICATIONS:

Style: Stone

Scenic Finish: Upon request

Full Sheet Dimensions:

5'4" High x 6'6" Wide

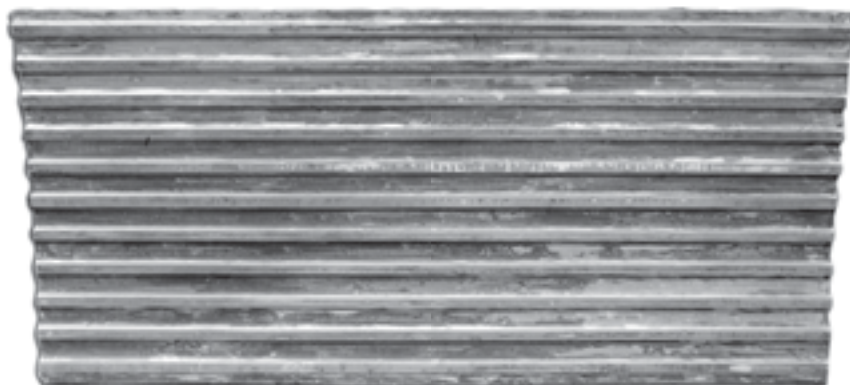
Price: Call for details

SPECIAL FEATURES: Weather proof, highly durable, lightweight, low maintenance
Flame retardant - available.



ALUMINUM SIDING 2

#F70



SPECIFICATIONS:

Style: Tin

Scenic Finish: Upon request

Full Sheet Dimensions:

3'6" High x 7'6" Wide

Price: Call for details

SPECIAL FEATURES: Weather proof, highly durable, lightweight, low maintenance
Flame retardant - available.



BRICK ROOF TILE (NEW)

#F71



SPECIFICATIONS:

Style: Roof Tile

Scenic Finish: Upon request

Full Sheet Dimensions:

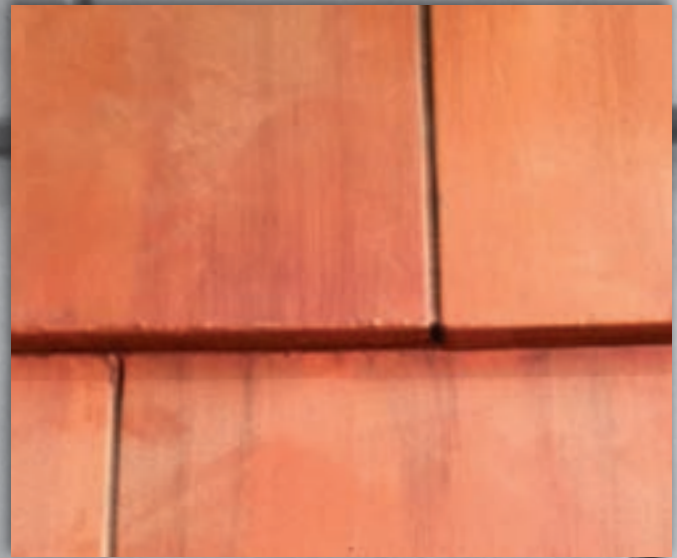
3'2" High x 6'8" Wide

Single Tile Size:

5" TO 9"

Price: Call for details

SPECIAL FEATURES: Weather proof, highly durable, lightweight, low maintenance
Flame retardant - available.



CEDAR SHINGLE

#F72



SPECIFICATIONS:

Style: Roof Tile

Scenic Finish: Upon request

Full Sheet Dimensions:

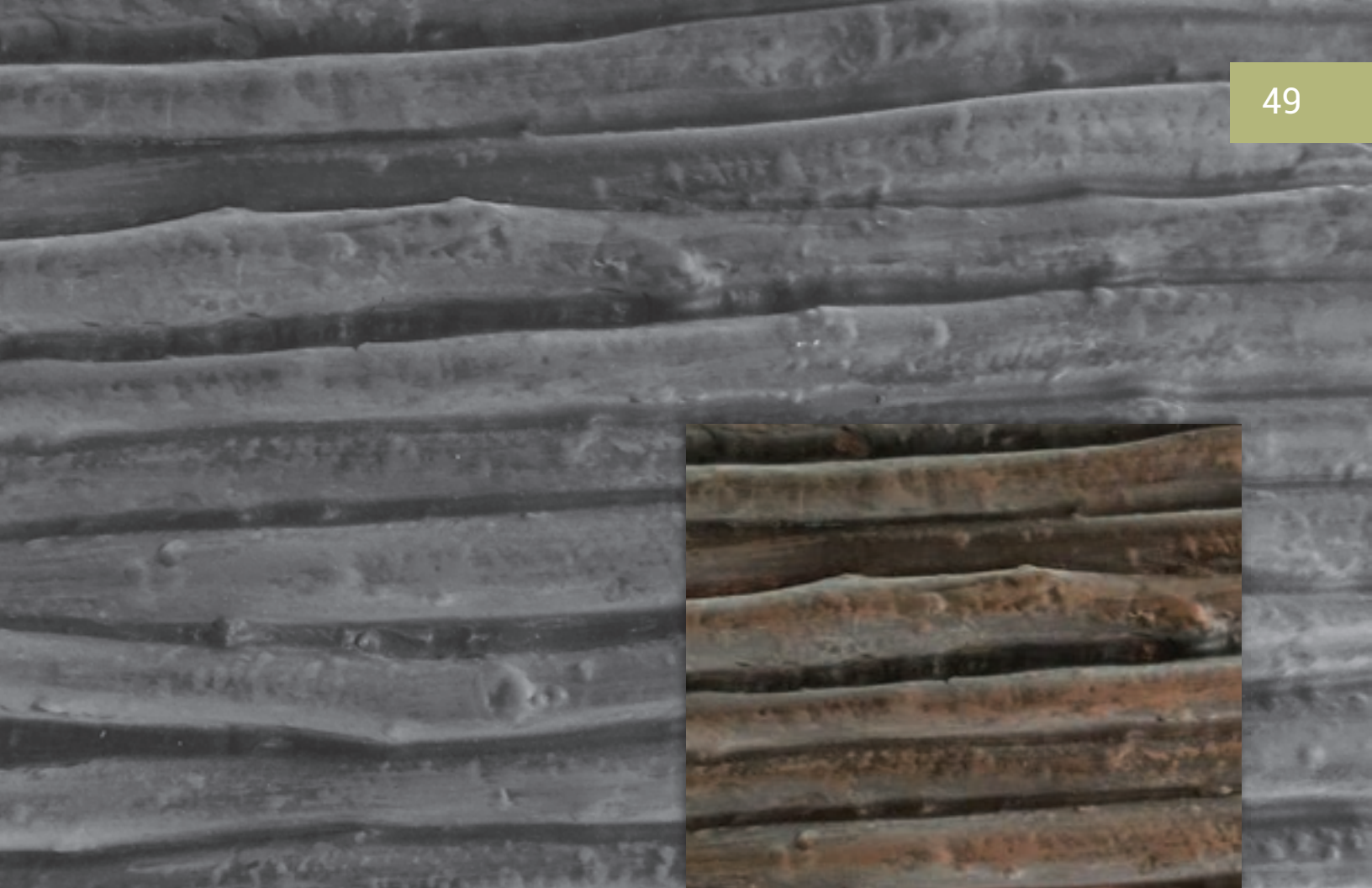
3'6" High x 6'6" Wide

Single Tile Size:

8" TO 11"

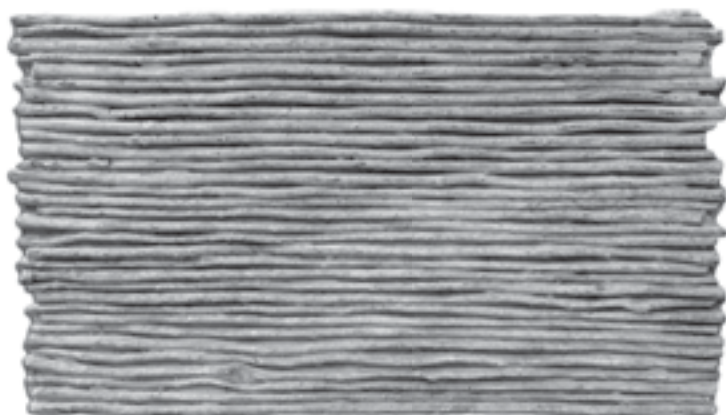
Price: Call for details

SPECIAL FEATURES: Weather proof, highly durable, lightweight, low maintenance
Flame retardant - available.



BAMBOO SIDING

#F78



SPECIFICATIONS:

Style: Roof Tile

Scenic Finish: Upon request

Full Sheet Dimensions:

3" High x 6'4" Wide

Price: Call for details

SPECIAL FEATURES: Weather proof, highly durable, lightweight, low maintenance
Flame retardant - available.



WOOD SHINGLES

#F102



SPECIFICATIONS:

Style: Roof Tile

Scenic Finish: Upon request

Full Sheet Dimensions:


3'5" High x 7'1" Wide

Single Tile Size:

5" TO 6"

Price: Call for details

SPECIAL FEATURES: Weather proof, highly durable, lightweight, low maintenance
Flame retardant - available.



Bold Stone #F21

STONE



DUNGEON STONE

#F15



SPECIFICATIONS:

Style: Stone

Scenic Finish: Upon request

Full Sheet Dimensions:

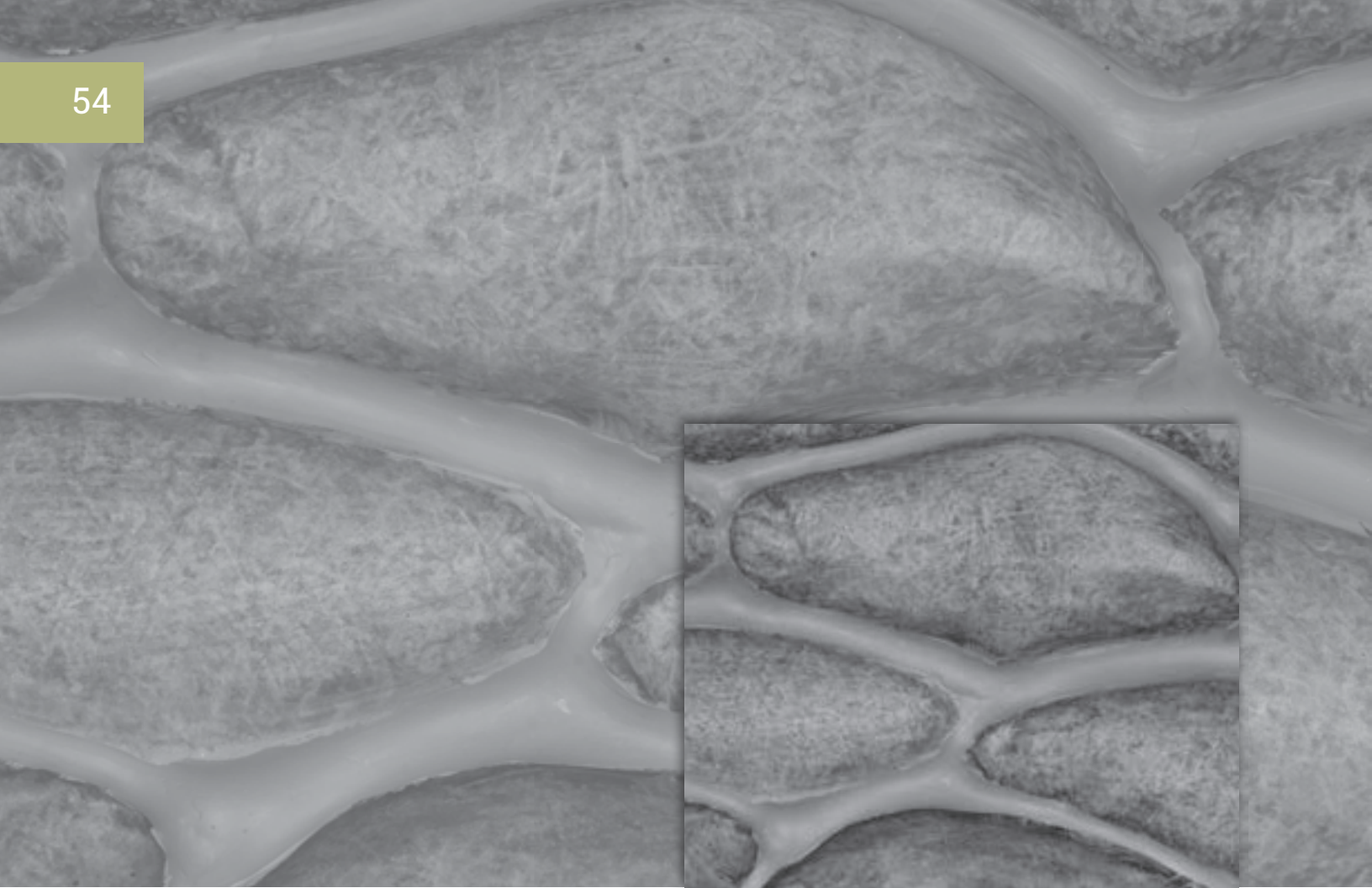
3'9" High x 6' Wide

Single Stone Size:

4"x 5" TO 11"x16"

Price: Call for details

SPECIAL FEATURES: Weather proof, highly durable, lightweight, low maintenance
Flame retardant - available.



STACKED SAND BAGS

#F16



SPECIFICATIONS:

Style: Stone

Scenic Finish: Upon request

Full Sheet Dimensions:

3'6" High x 5'9" Wide

Single Stone Size:

5" TO 16"

Price: Call for details

SPECIAL FEATURES: Weather proof, highly durable, lightweight, low maintenance
Flame retardant - available.



FIELD STONE

#F20



SPECIFICATIONS:

Style: Stone

Scenic Finish: Upon request

Full Sheet Dimensions:

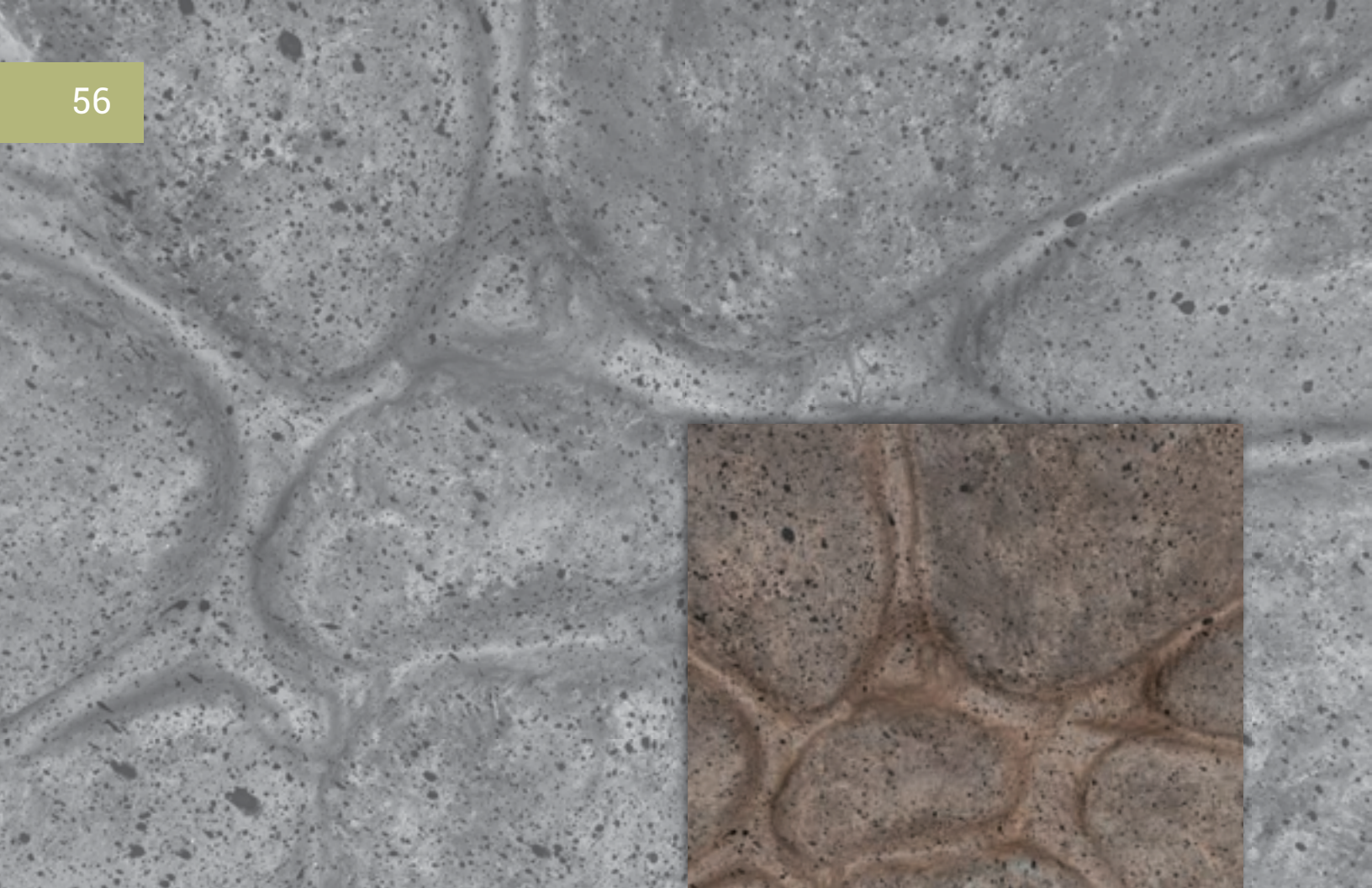
3' High x 6' Wide

Single Stone Size:

7" TO 11" Random

Price: Call for details

SPECIAL FEATURES: Weather proof, highly durable, lightweight, low maintenance
Flame retardant - available.



BOLD STONE

#F21



SPECIFICATIONS:

Style: Stone

Scenic Finish: Upon request

Full Sheet Dimensions:

3'8" High x 7' Wide

Single Stone Size:

8" to 11" Random

Price: Call for details

SPECIAL FEATURES: Weather proof, highly durable, lightweight, low maintenance
Flame retardant - available.



FLAGSTONE

#F22



SPECIFICATIONS:

Style: Stone

Scenic Finish: Upon request

Full Sheet Dimensions:

3'9" High x 5'6" Wide

Single Stone Size:

8" TO 12" Random

Price: Call for details

SPECIAL FEATURES: Weather proof, highly durable, lightweight, low maintenance
Flame retardant - available.



ROCK 1

#F23



SPECIFICATIONS:

Style: Stone

Scenic Finish: Upon request

Full Sheet Dimensions:

3'6" High x 6' Wide

Single Stone Size:

6" to 8" Random

Price: Call for details

SPECIAL FEATURES: Weather proof, highly durable, lightweight, low maintenance
Flame retardant - available.



STONE 2

#F24



SPECIFICATIONS:

Style: Stone

Scenic Finish: Upon request

Full Sheet Dimensions:

3'6" High x 6' Wide

Single Stone Size:

4" x 6" to 9" x 16"

Price: Call for details

SPECIAL FEATURES: Weather proof, highly durable, lightweight, low maintenance
Flame retardant - available.



ROCK 2

#F25

SPECIFICATIONS:

Style: Stone

Scenic Finish: Upon request

Full Sheet Dimensions:

3' High x 6' Wide

Single Stone Size:

6" x 12" Random

Price: Call for details

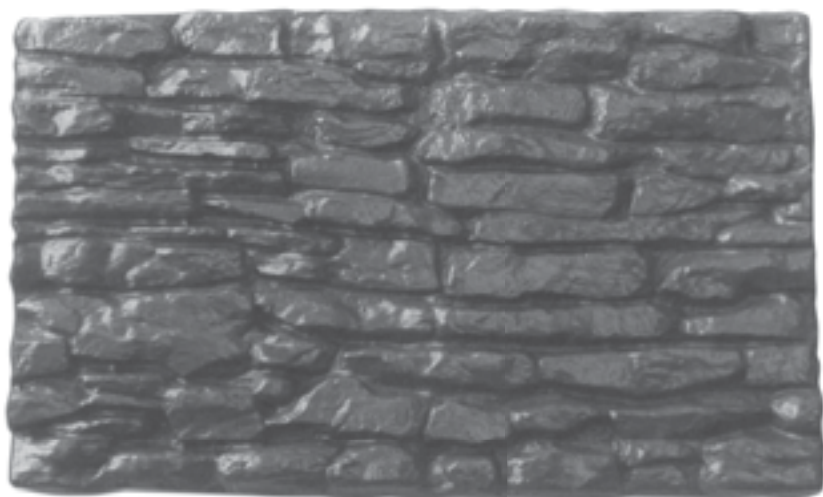


SPECIAL FEATURES: Weather proof, highly durable, lightweight, low maintenance
Flame retardant - available.



FLAGSTONE STACKED

#F26



SPECIFICATIONS:

Style: Stone

Scenic Finish: Upon request

Full Sheet Dimensions:

3'6" High x 6' Wide

Single Stone Size:

2½" x 12" Random

Price: Call for details

SPECIAL FEATURES: Weather proof, highly durable, lightweight, low maintenance
Flame retardant - available.



SMALL CUT STONE

#F27



SPECIFICATIONS:

Style: Stone

Scenic Finish: Upon request

Full Sheet Dimensions:

3'6" High x 6' Wide

Single Stone Size:

5" x 5" TO 7" x 16"

Price: Call for details

SPECIAL FEATURES: Weather proof, highly durable, lightweight, low maintenance
Flame retardant - available.



ADOBE

#F28



SPECIFICATIONS:

Style: Stone

Scenic Finish: Upon request

Full Sheet Dimensions:

3½' High x 6' Wide

Single Stone Size:

4" x 16"

Price: Call for details

SPECIAL FEATURES: Weather proof, highly durable, lightweight, low maintenance
Flame retardant - available.



SLUMP STONE 1

#F29

SPECIFICATIONS:

Style: Stone

Scenic Finish: Upon request

Full Sheet Dimensions:

3'3½" High x 6'7" Wide

Single Stone Size:

3½" x 15"

Price: Call for details



SPECIAL FEATURES: Weather proof, highly durable, lightweight, low maintenance
Flame retardant - available.



STONE 1

#F30



SPECIFICATIONS:

Style: Stone

Scenic Finish: Upon request

Full Sheet Dimensions:

3' High x 5' Wide

Single Stone Size:

3" TO 14" Random

Price: Call for details

SPECIAL FEATURES: Weather proof, highly durable, lightweight, low maintenance
Flame retardant - available.



RIVER ROCK

#F31



SPECIFICATIONS:

Style: Stone

Scenic Finish: Upon request

Full Sheet Dimensions:

3'6" High x 6'6" Wide

Single Stone Size:

4" x 4" TO 9" x 9"

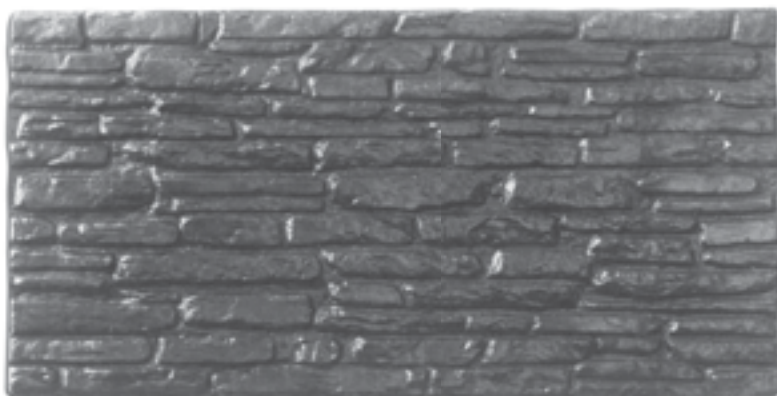
Price: Call for details

SPECIAL FEATURES: Weather proof, highly durable, lightweight, low maintenance
Flame retardant - available.



FLAGSTONE (Horizontal)

#F32



SPECIFICATIONS:

Style: Stone

Scenic Finish: Upon request

Full Sheet Dimensions:

3' High x 6' Wide

Single Stone Size:

2" x 12" Random

Price: Call for details

SPECIAL FEATURES: Weather proof, highly durable, lightweight, low maintenance
Flame retardant - available.



ASHLER CUT STONE

#F33



SPECIFICATIONS:

Style: Stone

Scenic Finish: Upon request

Full Sheet Dimensions:

2'6" High x 6' Wide

Single Stone Size:

6½" x 8" to 4" x 16"

Price: Call for details

SPECIAL FEATURES: Weather proof, highly durable, lightweight, low maintenance
Flame retardant - available.



LARGE SLATE

#F35



SPECIFICATIONS:

Style: Stone

Scenic Finish: Upon request

Full Sheet Dimensions:

3'6" High x 6'6" Wide

Single Stone Size:

9½" x 11½"

Price: Call for details

SPECIAL FEATURES: Weather proof, highly durable, lightweight, low maintenance
Flame retardant - available.



SMALL SLATE

#F36



SPECIFICATIONS:

Style: Stone

Scenic Finish: Upon request

Full Sheet Dimensions:

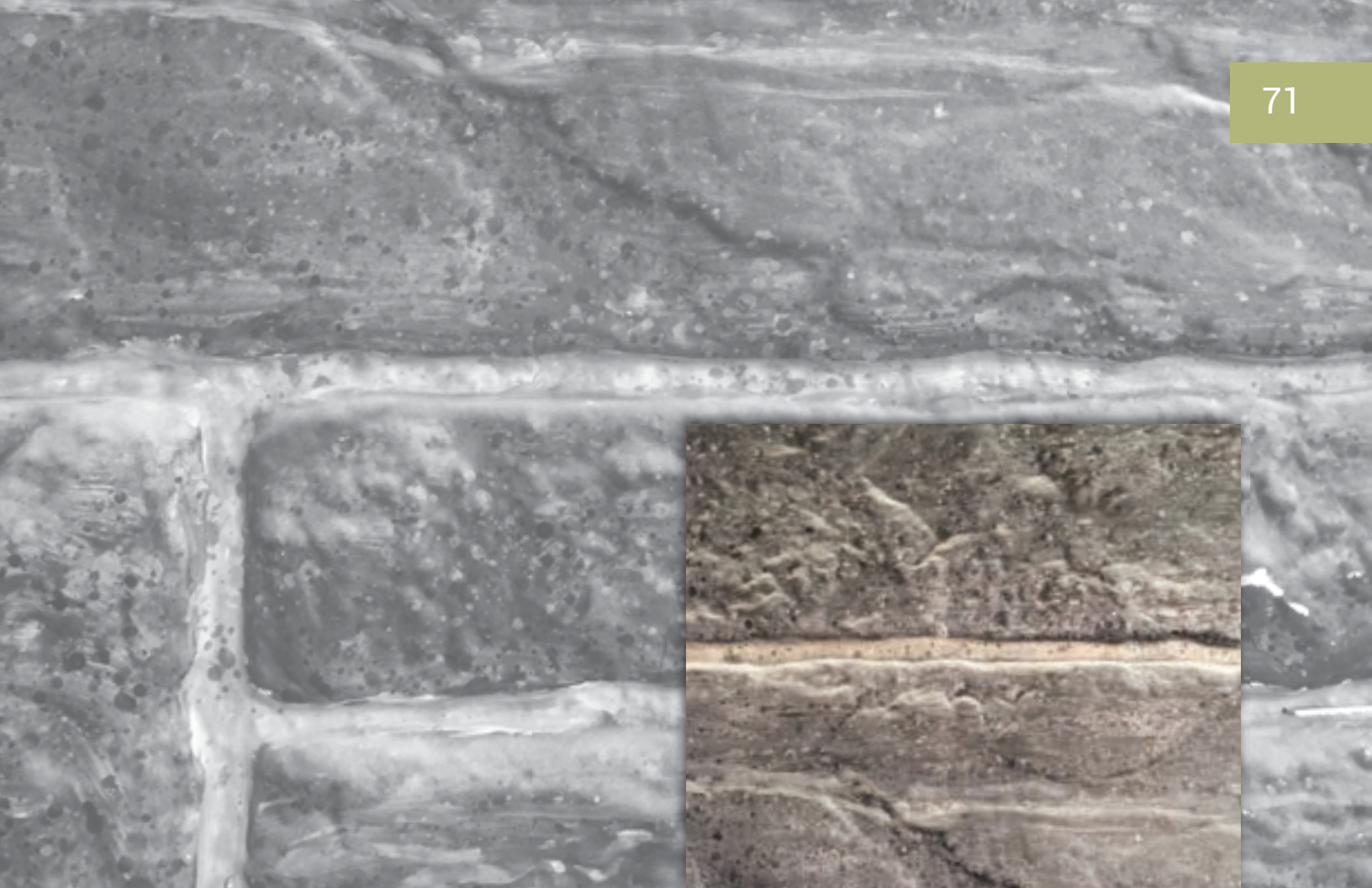
4' High x 8' Wide

Single Stone Size:

2¼" x 3½"

Price: Call for details

SPECIAL FEATURES: Weather proof, highly durable, lightweight, low maintenance
Flame retardant - available.



CUT STONE

#F37



SPECIFICATIONS:

Style: Stone

Scenic Finish: Upon request

Full Sheet Dimensions:

3'6" High x 7' Wide

Single Stone Size:

4" x 8" TO 9" x 23"

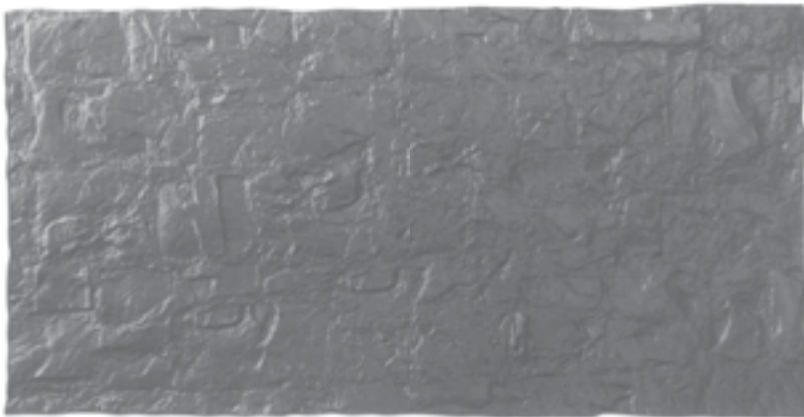
Price: Call for details

SPECIAL FEATURES: Weather proof, highly durable, lightweight, low maintenance
Flame retardant - available.



BUMSTEAD STONE

#F38



SPECIFICATIONS:

Style: Stone

Scenic Finish: Upon request

Full Sheet Dimensions:

3'6" High x 7' Wide

Single Stone Size:

7" x 10" Random

Price: Call for details

SPECIAL FEATURES: Weather proof, highly durable, lightweight, low maintenance
Flame retardant - available.



CINDERBLOCK

#F43



SPECIFICATIONS:

Style: Stone

Scenic Finish: Upon request

Full Sheet Dimensions:

3'6" High x 6'6" Wide

Single Stone Size:

7½" x 15½"

Price: Call for details

SPECIAL FEATURES: Weather proof, highly durable, lightweight, low maintenance
Flame retardant - available.



SLUMP STONE 2

#F44



SPECIFICATIONS:

Style: Stone

Scenic Finish: Upon request

Full Sheet Dimensions:

3'6" High x 7'6" Wide

Single Stone Size:

5½" x 13½"

Price: Call for details

SPECIAL FEATURES: Weather proof, highly durable, lightweight, low maintenance
Flame retardant - available.



FORMAL CUT STONE

#F45



SPECIFICATIONS:

Style: Stone

Scenic Finish: Upon request

Full Sheet Dimensions:

3' High x 6' Wide

Single Stone Size:

9 $\frac{3}{4}$ " x 21 $\frac{3}{4}$ "

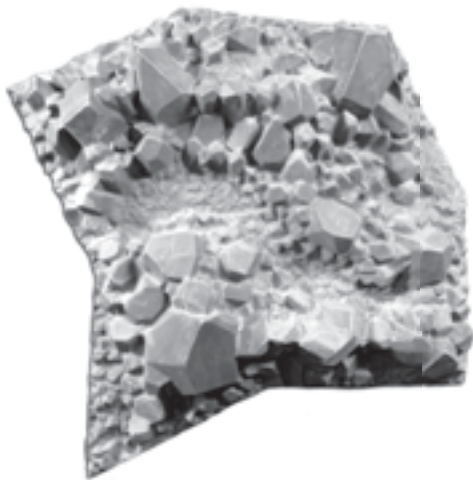
Price: Call for details

SPECIAL FEATURES: Weather proof, highly durable, lightweight, low maintenance
Flame retardant - available.



ROCK CRYSTALS

#F64



SPECIFICATIONS:

Style: Stone

Scenic Finish: Upon request

Full Sheet Dimensions:

45"H x 44"W x 14P"

Price: Call for details

SPECIAL FEATURES: Weather proof, highly durable, lightweight, low maintenance
Flame retardant - available.



STACKED FLAGSTONE

#F65



SPECIFICATIONS:

Style: Stone

Scenic Finish: Upon request

Full Sheet Dimensions:

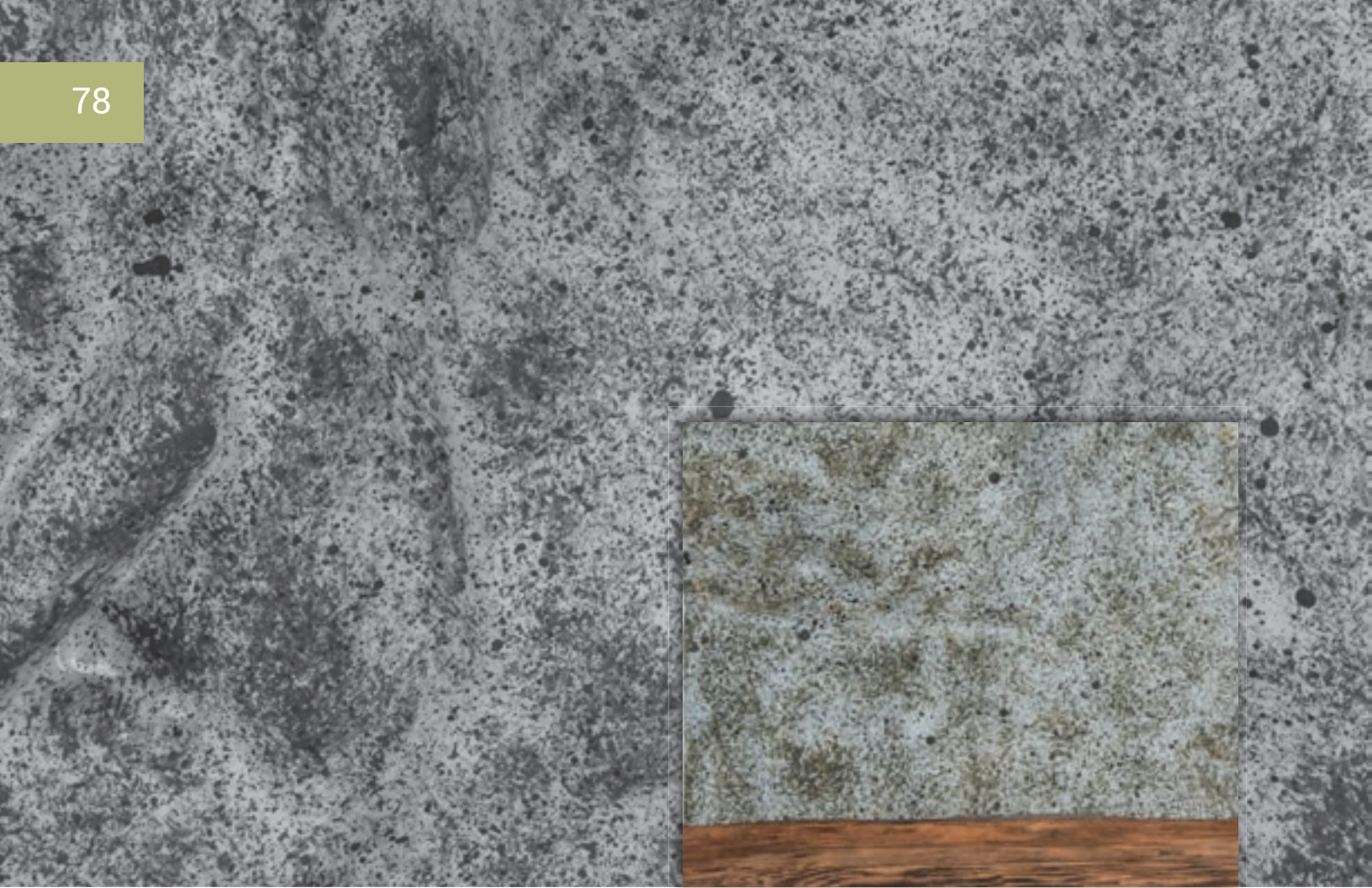
3'6" High x 5'4" Wide

Single Stone Size:

4" x 9½" Random

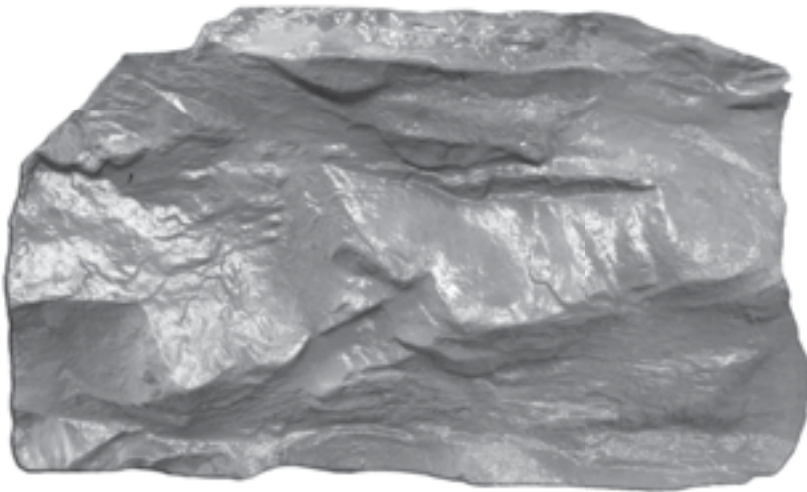
Price: Call for details

SPECIAL FEATURES: Weather proof, highly durable, lightweight, low maintenance
Flame retardant - available.



JAGGED ROCK

#F69



SPECIFICATIONS:

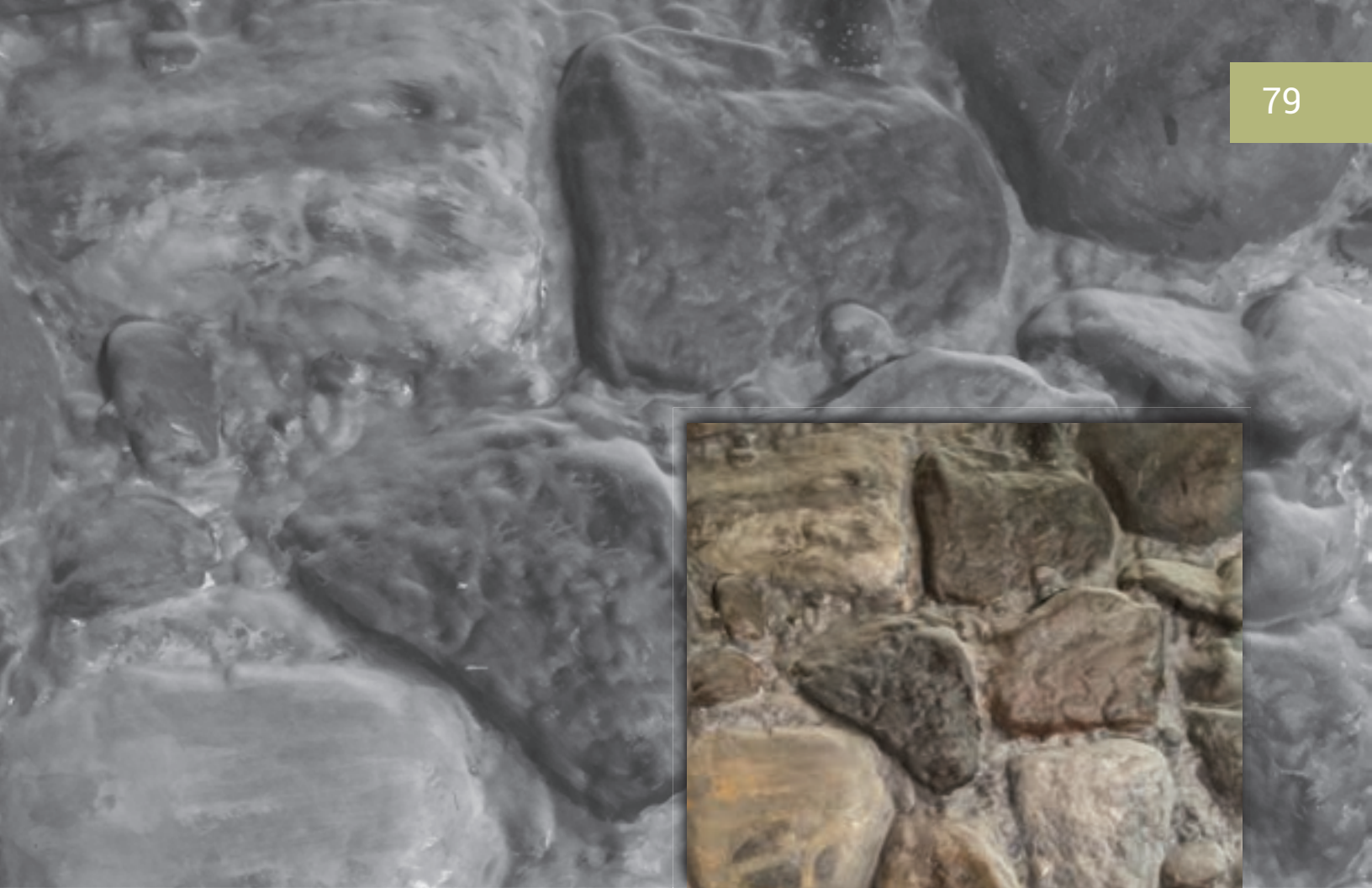
Style: Stone

Scenic Finish: Upon request

Full Sheet Dimensions:

3'6" High x 5'8" Wide

SPECIAL FEATURES: Weather proof, highly durable, lightweight, low maintenance
Flame retardant - available.



COBLESTONE

#F74



SPECIFICATIONS:

Style: Stone

Scenic Finish: Upon request

Full Sheet Dimensions:

3'5" High x 7'5" Wide

Single Stone Size:

6" x 6"

Price: Call for details

SPECIAL FEATURES: Weather proof, highly durable, lightweight, low maintenance
Flame retardant - available.



FORTRESS ROCK

#F75



SPECIFICATIONS:

Style: Stone

Scenic Finish: Upon request

Full Sheet Dimensions:

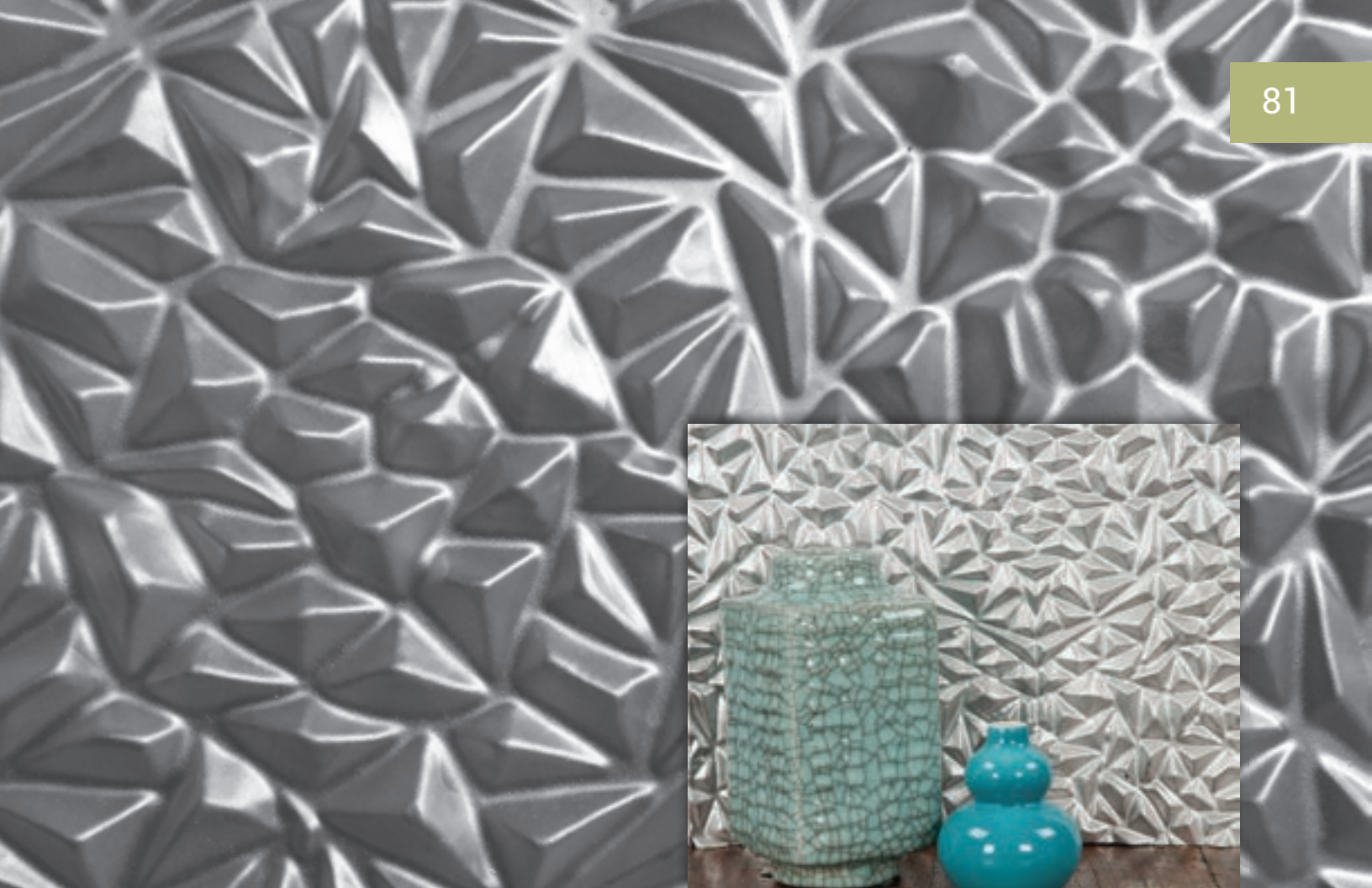
3'6" High x 7' Wide

Single Stone Size:

7" x 14" Random

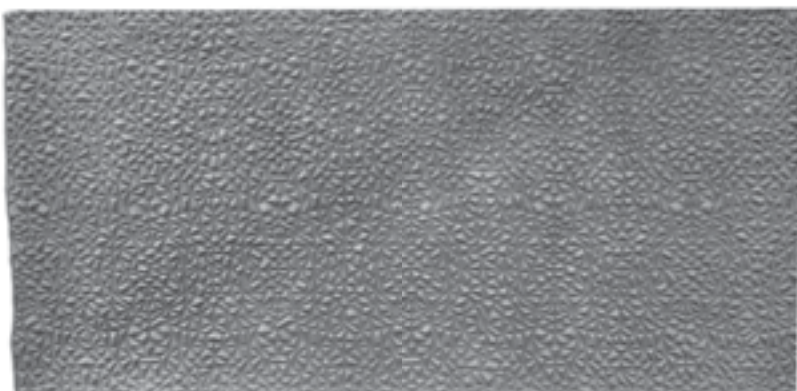
Price: Call for details

SPECIAL FEATURES: Weather proof, highly durable, lightweight, low maintenance
Flame retardant - available.



CAVE CRYSTALS

#F76



SPECIFICATIONS:

Style: Tin

Scenic Finish: Upon request

Full Sheet Dimensions:

3'8" High x 7'8" Wide

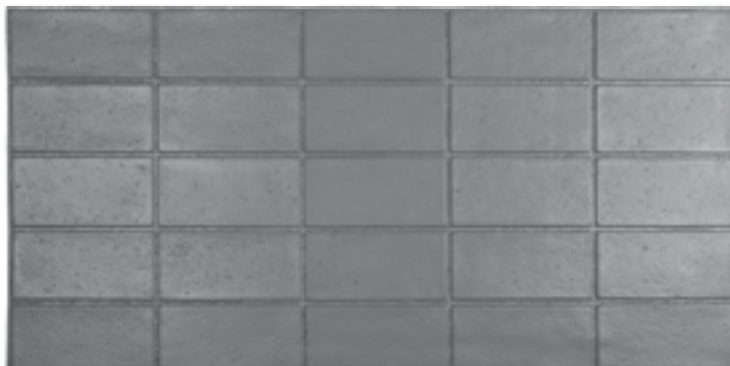
Price: Call for details

SPECIAL FEATURES: Weather proof, highly durable, lightweight, low maintenance
Flame retardant - available.



STACKED CINDERBLOCK

#F95



SPECIFICATIONS:

Style: Stone

Scenic Finish: Upon request

Full Sheet Dimensions:

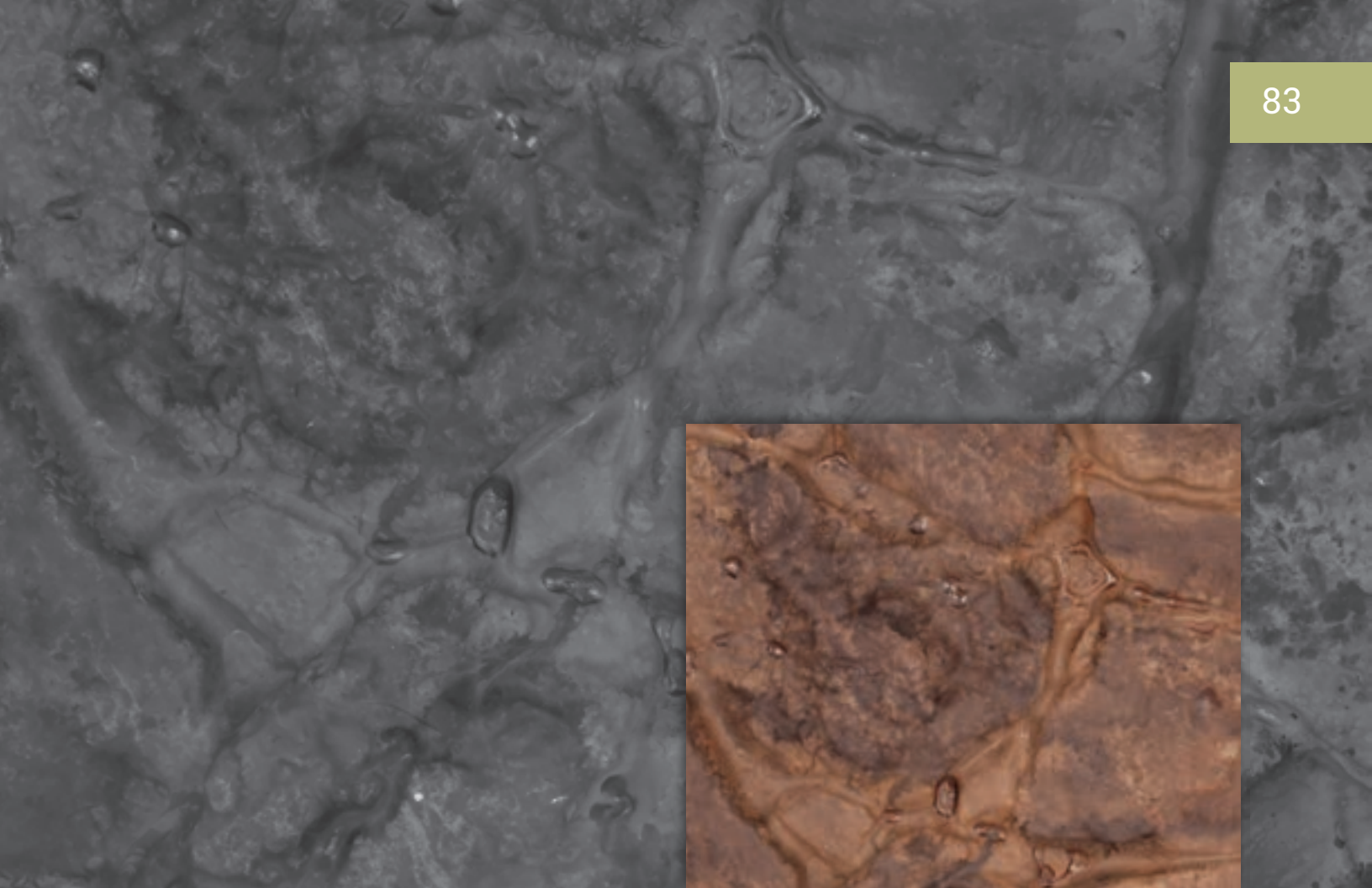
3'4" High x 6'8" Wide

Single Stone Size:

7½" x 15½"

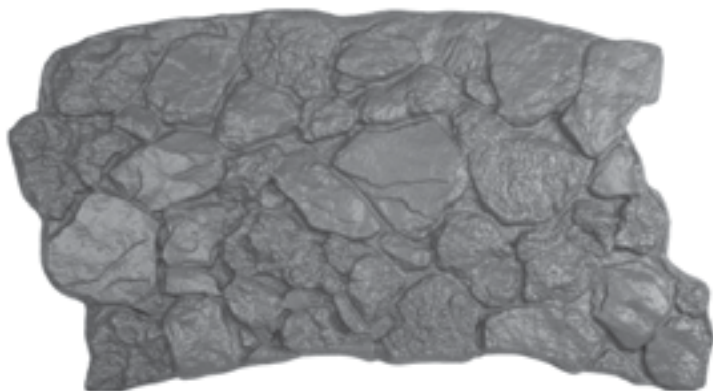
Price: Call for details

SPECIAL FEATURES: Weather proof, highly durable, lightweight, low maintenance
Flame retardant - available.



PALOS VERDES ROCK

#F96



SPECIFICATIONS:

Style: Stone

Scenic Finish: Upon request

Full Sheet Dimensions:

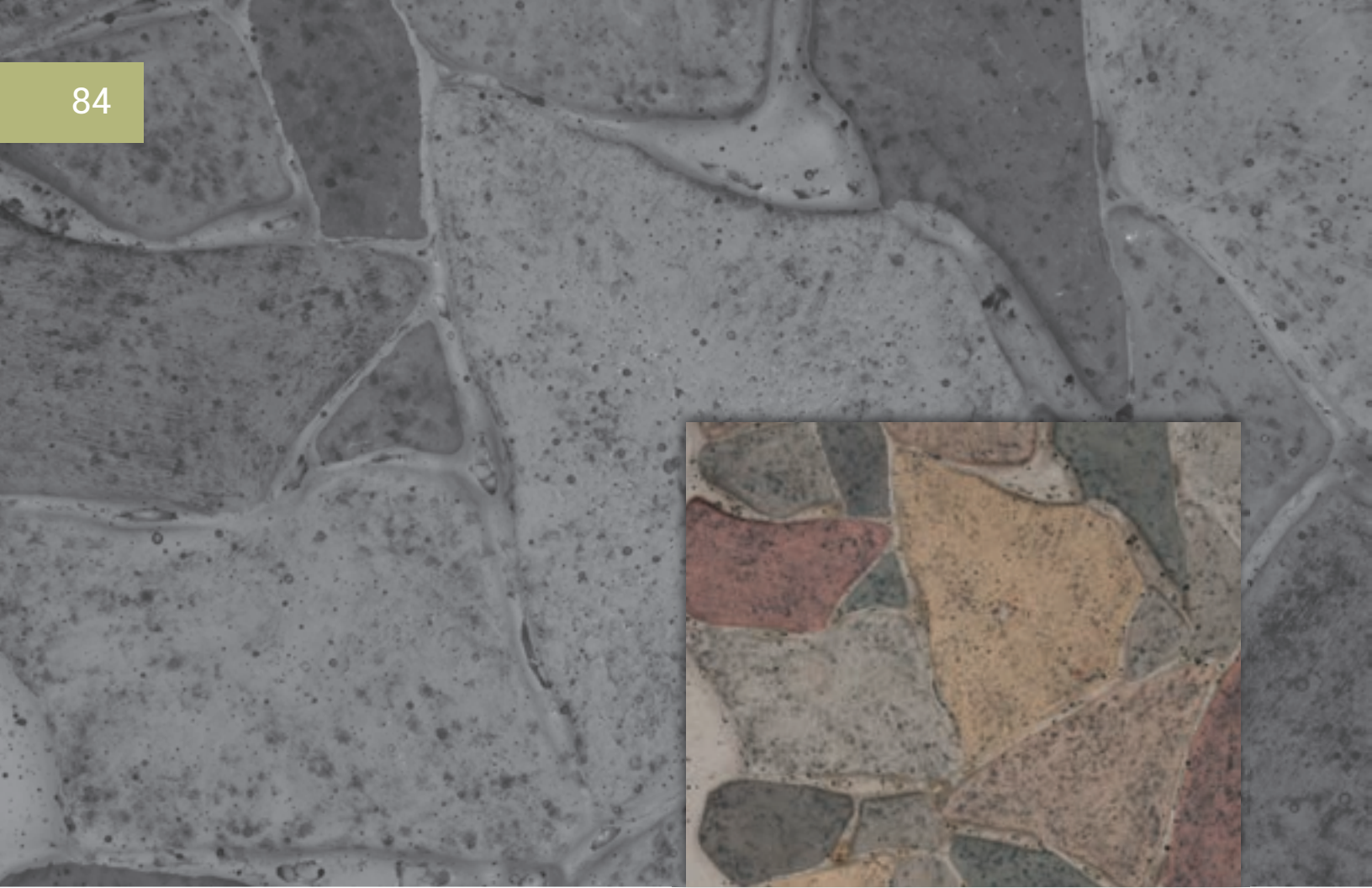
3'3" High x 6' Wide

Single Stone Size:

6" TO 10" Random

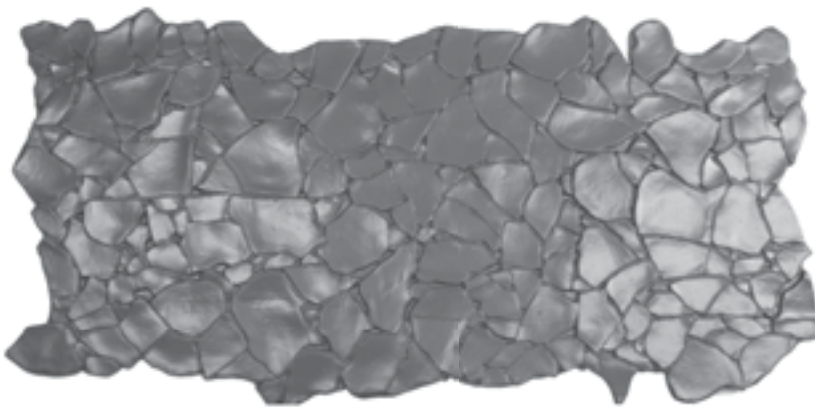
Price: Call for details

SPECIAL FEATURES: Weather proof, highly durable, lightweight, low maintenance
Flame retardant - available.



DRY LAKEBED

#F97



SPECIFICATIONS:

Style: Stone

Scenic Finish: Upon request

Full Sheet Dimensions:

3'1" High x 7'1" Wide

Single Stone Size:

6" TO 7" Random

Price: Call for details

SPECIAL FEATURES: Weather proof, highly durable, lightweight, low maintenance
Flame retardant - available.



STACKED CINDERBLOCK

#F100



SPECIFICATIONS:

Style: Tile

Scenic Finish: Upon request

Full Sheet Dimensions:

3'5" High x 6'9" Wide

Single Tile Size:

7½" TO 15½"

Price: Call for details

SPECIAL FEATURES: Weather proof, highly durable, lightweight, low maintenance
Flame retardant - available.



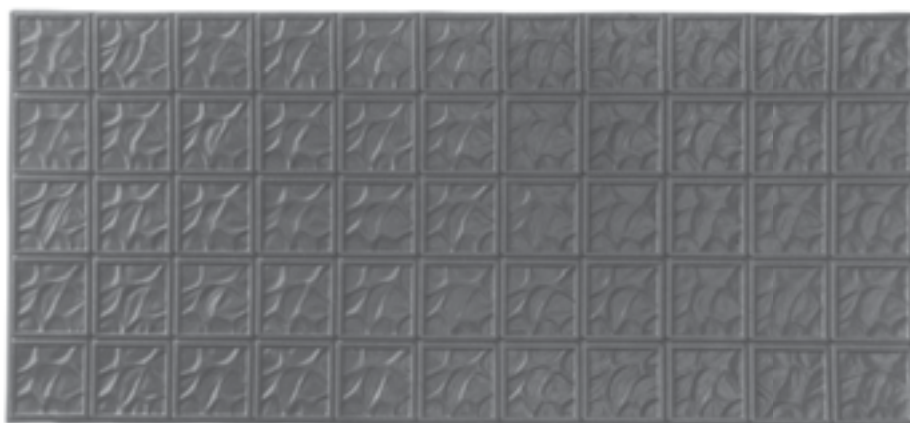
New Lincresta #F61

TIN / GLASS BLOCK /
WALL TILE



8" GLASS BLOCK

#F57



SPECIFICATIONS:

Style: Glass

Scenic Finish: Upon request

Full Sheet Dimensions:

3'6" High x 7' Wide

Single Tile Size:

8" x 8"

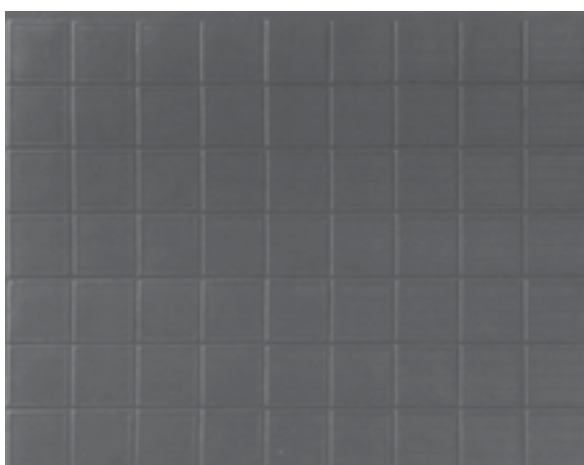
Price: Call for details

SPECIAL FEATURES: Weather proof, highly durable, lightweight, low maintenance
Flame retardant - available.



6" GLASS BLOCK

#F58



SPECIFICATIONS:

Style: Glass

Scenic Finish: Upon request

Full Sheet Dimensions:

3'6" High x 5'6" Wide

Single Tile Size:

6" x 6"

Price: Call for details

SPECIAL FEATURES: Weather proof, highly durable, lightweight, low maintenance
Flame retardant - available.



LINCRESTA

#F59



SPECIFICATIONS:

Style: Tin

Scenic Finish: Upon request

Full Sheet Dimensions:

3' High x 6' Wide

Single Tile Size:

6" x 6"

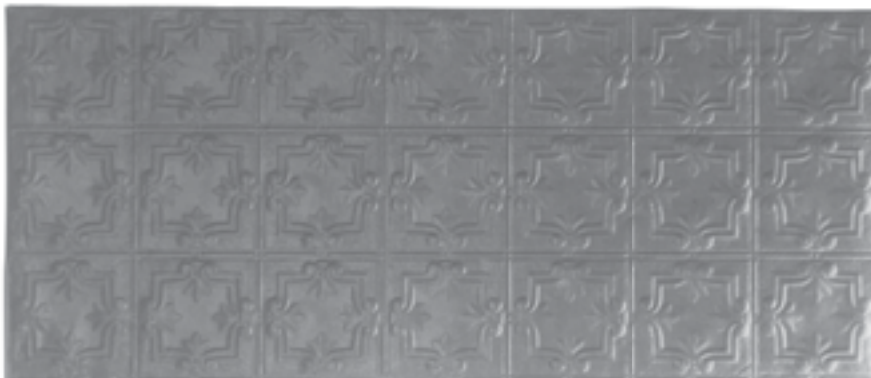
Price: Call for details

SPECIAL FEATURES: Weather proof, highly durable, lightweight, low maintenance
Flame retardant - available.



OLD LINCRESTA

#F60



SPECIFICATIONS:

Style: Tin

Scenic Finish: Upon request

Full Sheet Dimensions:

3' High x 7' Wide

Single Tile Size:

12" x 12"

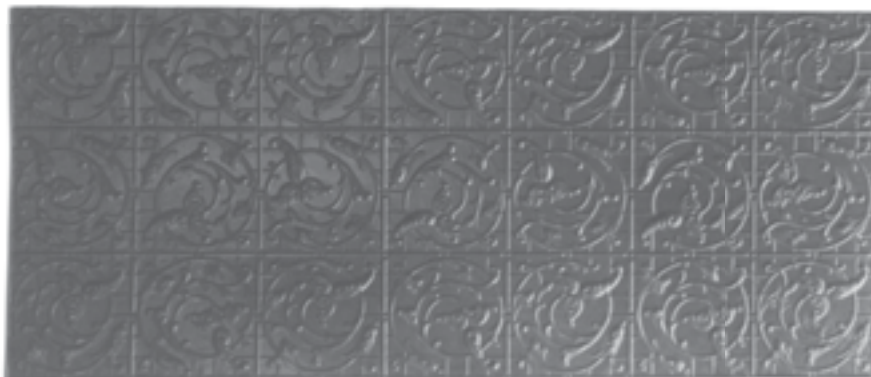
Price: Call for details

SPECIAL FEATURES: Weather proof, highly durable, lightweight, low maintenance
Flame retardant - available.



NEW LINCRESTA

#F61

**SPECIFICATIONS:**

Style: Tin

Scenic Finish: Upon request

Full Sheet Dimensions:

3' High x 7' Wide

Single Tile Size:

12" x 12"

Price: Call for details

SPECIAL FEATURES: Weather proof, highly durable, lightweight, low maintenance
Flame retardant - available.



WALL TILE

#F77



SPECIFICATIONS:

Style: Tile

Scenic Finish: Upon request

Full Sheet Dimensions:

3'6" High x 7' Wide

Single Tile Size:

5 $\frac{3}{4}$ " TO 11 $\frac{3}{4}$ "

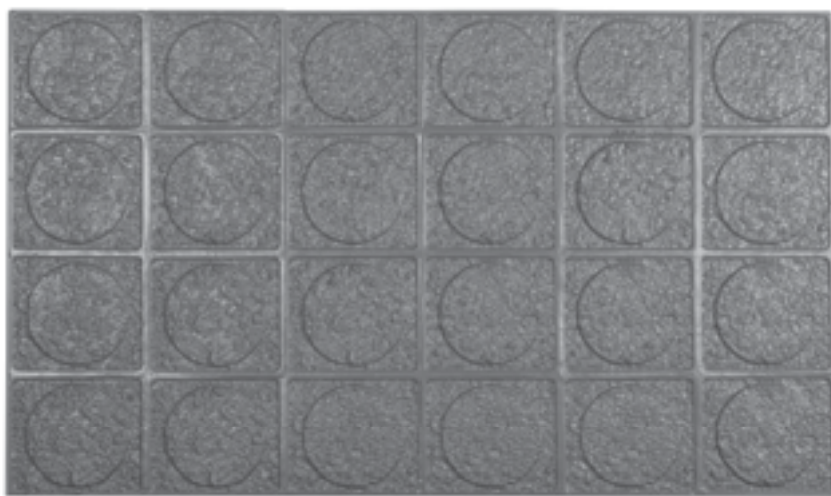
Price: Call for details

SPECIAL FEATURES: Weather proof, highly durable, lightweight, low maintenance
Flame retardant - available.



GLASS BLOCK

#F98



SPECIFICATIONS:

Style: Glass

Scenic Finish: Upon request

Full Sheet Dimensions:

2'10" High x 4'10" Wide

Price: Call for details

Single Tile Size:

8" TO 8"

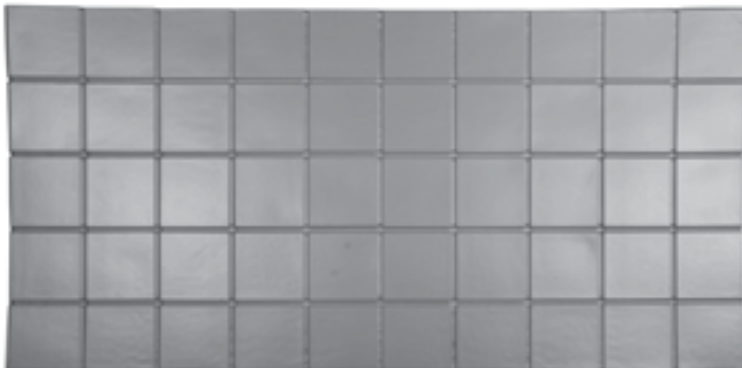
Price: Call for details

SPECIAL FEATURES: Weather proof, highly durable, lightweight, low maintenance
Flame retardant - available.



WALL TILE 1

#F99



SPECIFICATIONS:

Style: Tile

Scenic Finish: Upon request

Full Sheet Dimensions:

3'7" High x 7'2" Wide

Single Tile Size:

8" TO 8"

Price: Call for details

SPECIAL FEATURES: Weather proof, highly durable, lightweight, low maintenance
Flame retardant - available.



WALL TILE 2

#F101



SPECIFICATIONS:

Style: Tile

Scenic Finish: Upon request

Full Sheet Dimensions:

3'7" High x 7½' Wide

Single Tile Size:

4" TO 6"

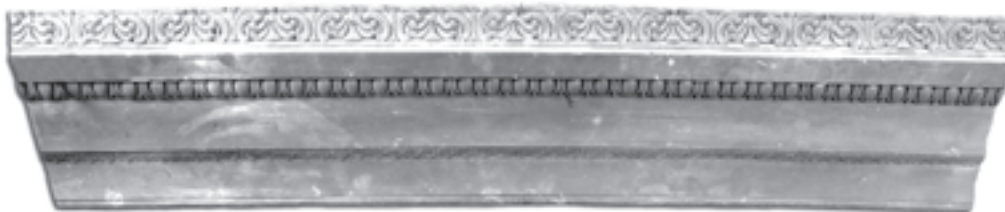
Price: Call for details

SPECIAL FEATURES: Weather proof, highly durable, lightweight, low maintenance
Flame retardant - available.



TRIMS

#F80



9½" _H x 45" _L x 1½" _P

#F81



7½" _H x 46" _L x 1¾" _P

#F82



6½" _H x 43½" _L x 4½" _P

#F83



13" _H x 38½" _L x 3" _P

#F84



15¼" _H x 41¾" _L x 4½" _P

#F85



12" _H x 38¾" _L x 3¾" _P

#F86



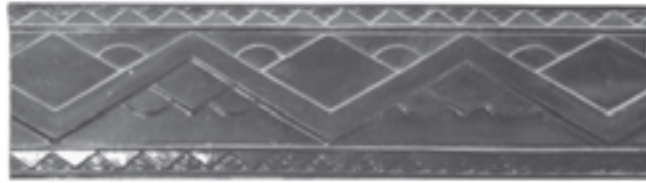
24" _H x 29¼" _W x 5½" _P

SPECIAL FEATURES:

Weather proof, highly durable, lightweight, low maintenanc. Flame retardant - available.



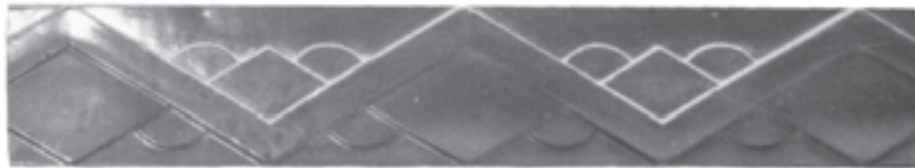
#F88

10"_H x 5'10"_L

#F89

10½"_H x 7'6"_L

#F90

5¾"_H x 7'6"_L

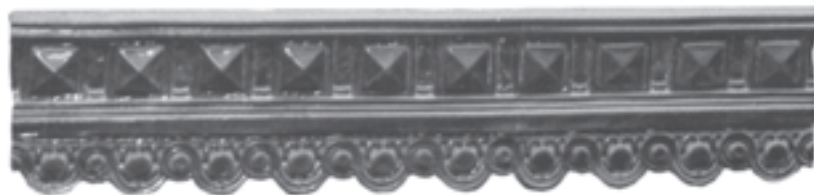
#F91

7"_H x 7'_L

#F92

9½"_H x 7'6"_L

#F93

7"_H x 7'6"_L

#F94

9"_H x 7'5"_L

Warner Bros. Design Studio Fabricated Surfaces Collection

Index

Brick	#	Page	Stone	#	Page
Add Ons	F47 A-D	14	Adobe	F28	63
Aged Common Brick	F14	9	Ashler Cut Stone	F33	68
Aged Brick (Brownstone)	F79	26	Bold Stone	F21	56
Annie Brick	F48	15	Bumstead Stone	F38	72
Brick and Mortar	F66	24	Cave Crystals	F76	81
Chester Brick	F110	28	Cinderblock	F43	73
Clue Brick	F18	11	Cobblestone	F74	79
Combed Brick	F1/F5	1/2.	Cut Stone	F37	71
Combed Brick 2	F49	16	Dry Lakebed	F97	84
Dale Brick	F17	10	Dungeon Stone	F15	53
Dis Common Brick	F7	4	Field Stone	F20	55
F/2 Brick	F46	13	Flagstone	F22	57
Large Flemish Bond	F54	21	Flagstone (Horizontal)	F32	67
Murder Your Wife	F51	18	Flagstone Stacked	F26	61
New Common Brick	F50	17	Formal Cut Stone	F45	75
New Herringbone	F12	8	Fortress Rock	F75	80
N.Y. Brick	F109	27	Jagged Rock	F69	78
Old Common Brick	F52	19	Large Slate	F35	69
Riva Brick	F63	23	Palos Verdes Rock	F96	83
Roman Brick	F9	6	River Rock	F31	66
Roman Stacked	F10/F34	7/12	Rock 1	F23	58
Small Flemish Bond	F53	20	Rock 2	F25	60
Squeezes Mortar	F6	3	Rock Crystals	F64	76
Roof Tile / Siding	#	Page	Slump Stone 1	F29	64
Aluminum Siding 2	F70	46	Slump Stone 2	F44	74
Bamboo Siding	F78	49	Small Cut Stone	F27	62
Brick Roof Tile (New)	F71	47	Small Slate	F36	70
Cedar Shingle	F72	48	Stacked Cinderblock	F95/	82/85
Gingerbread Shingle	F55	43	Stacked Flagstone	F100	77
Japanese Roof Tile	F39	39	Stacked Sand Bags	F65	54
Logs	F40	40	Stone 1	F16	65
Roof Tile	F42	42	Stone 2	F30	59
Spanish Roof Tile	F41	41	Tin/Glass Block/Wall Tile	#	Page
Tree Bark	F68	45	Glass Block	F98	95
Wood Shingles	F56/F102	44/50	6" Glass Block	F58	90
Contemporary	#	Page	8" Glass Block	F57	89
Panel A	F103	31	Lincresta	F59	91
Panel B	F104	32	New Lincresta	F61	93
Panel D	F106	33	Old Lincresta	F60	92
Panel E	F107	34	Wall Tile	F77	94
Panel F	F108	35	Wall Tile 1	F99	96
Trims	#	Page	Wall Tile 2	F101	97
	F80-F94	101/102			

